



National Alliance on Mental Illness



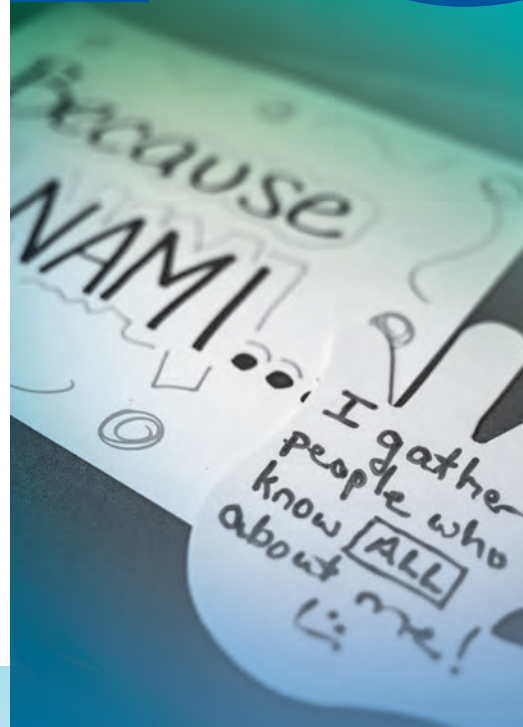
**2019 ANNUAL REPORT**



## Celebrating 40 years of leadership and impact for millions affected by mental illness.

The National Alliance on Mental Illness was founded in 1979, when two mothers from Madison, Wisconsin, reached out to others who shared their outrage at the stigma, discrimination and inadequate care their loved ones faced. When these families joined forces, NAMI became a powerful voice for change.

Today, NAMI is hundreds of thousands strong — a dynamic alliance seeking to transform the way mental illness is understood and treated. We are present in more than 600 communities, working for greater awareness, resources and empowerment on behalf of all people affected by mental illness.



## The hope we found in 1979 is the hope we continue to give.





## Our Vision

NAMI envisions a world where all people affected by mental illness live healthy, fulfilling lives supported by a community that cares.

---

## Our Mission

NAMI provides advocacy, education, support and public awareness so that all individuals and families affected by mental illness can build better lives.

---

## Our Values

### HOPE

We believe in the possibility of recovery, wellness and the potential in all of us.

### INCLUSION

We embrace diverse backgrounds, cultures and perspectives.

### EMPOWERMENT

We promote confidence, self-efficacy and service to our mission.

### COMPASSION

We practice respect, kindness and empathy.

### FAIRNESS

We fight for equity and justice.



**I believe  
we can save  
countless  
lives by  
devoting  
ourselves to  
the important  
work we have  
undertaken  
together.**

## **A personal message from NAMI CEO**

# **Daniel H. Gillison, Jr.**

Research shows that one of every five people in our country is living with a mental health condition.

**But we know the deeper truth. *Five out of every five of us are affected.*** There isn't a single individual you'll meet who doesn't know someone, live with someone, work with someone or care about someone who is dealing with mental illness.

My own mental health stories come from my experiences as a father, a son, an uncle and a cousin. I have seen lives lost and lives torn apart by the symptoms that all too often go unrecognized and untreated.

This is why I am humbled and honored to join NAMI as your new chief executive officer. I believe we can save countless lives by devoting ourselves to the important work we have undertaken together.

Through tireless effort that spans four decades, NAMI has transformed the way this nation understands and responds to mental illness. Mental health is having its moment — and we are at the forefront, leading the call for change.

Building on our history, and looking courageously to the future, we have the opportunity to achieve even more. We begin a new decade by renewing our quest to find innovative, impactful ways to advance our mission.

I look forward to working with all of you as we embrace the goals so clearly expressed in our new Strategic Plan. NAMI is the bold, ambitious, united force that will build a better world for everyone affected by mental illness.

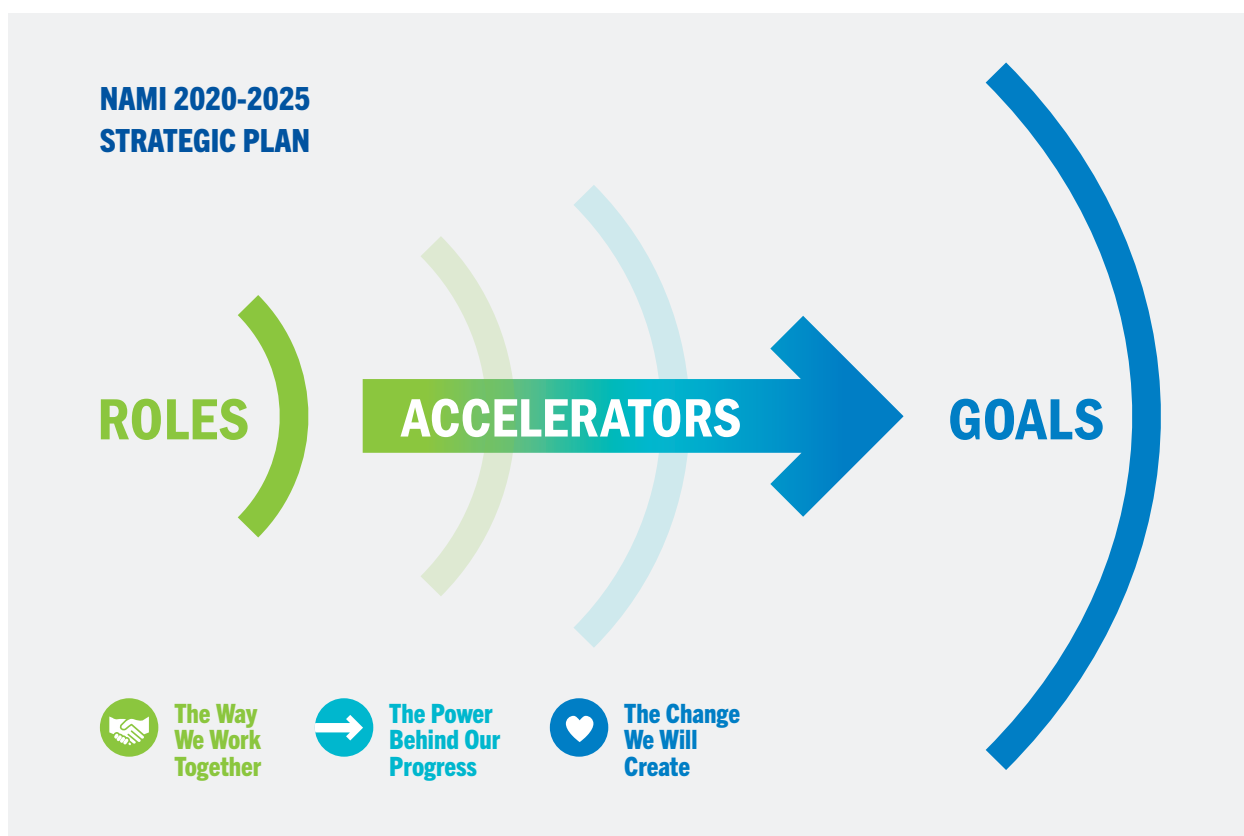
A handwritten signature in blue ink that reads "Dan". The signature is fluid and cursive, with a large, looping initial "D".

## NAMI's Strategic Plan for 2020–2025

# Building a bridge between our rich history and future opportunities.

An 18-month process of listening to thousands of stakeholders in all 50 states led to a new strategic vision that will inspire and energize our Alliance.

NAMI's new Strategic Plan recognizes that our strength arises from our grassroots presence in more than 600 communities across the country. The plan is both bold and achievable, defining how we will work to create a better world for millions of people and families impacted by mental illness.



### WE WILL

**EMBRACE CULTURAL COMPETENCY AND EQUITY,** seeking ways to better serve diverse communities.

**HARNESS TECHNOLOGY** to work efficiently, expand advocacy and public awareness and widen the impact of our education and support programs.

**ACTIVELY ENGAGE IN PARTNERSHIPS** that help us go further faster.

**STRENGTHEN AND SCALE NAMI'S WORK** through diverse and sustainable revenue strategies.

---

# Welcoming, valuing and serving all.

NAMI's strategic planning process highlighted inclusion, fairness, diversity and cultural competency as key values and drivers of our long-term success. This led to an exploration of best practices in the field, followed by decisive action to establish a new approach to these crucial issues.

In August 2019, we welcomed Monica Villalta, M.P.H., as our first-ever director of inclusion and diversity. As the senior officer in charge of strategic diversity, equity and inclusion efforts, Villalta began her assessment of the Alliance and sought to build the infrastructure and resources that will support:

## **A VIBRANT WORKFORCE**

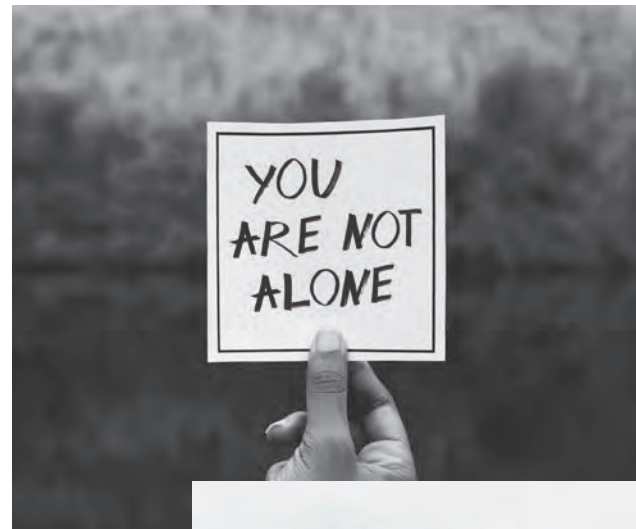
where all voices are heard and valued

## **ROBUST CULTURAL COMPETENCY**

that accelerates our progress on all levels

## **EFFECTIVE RESOURCES AND TOOLS**

to better reach and serve diverse communities across the Alliance



Throughout the year, NAMI also sought to achieve greater impact in underserved communities through:



**We know that differences in culture, language and community**

affect the way people think about mental illness and the way they seek help – or don't. Our goal is to achieve a deeper understanding of these differences, using our knowledge to reach and engage more people and families who need us.”

**MONICA VILLALTA, M.P.H.**  
*NAMI Director of Inclusion and Diversity*

**LONGTIME PARTNERSHIPS**

NAMI worked with Alpha Kappa Alpha, Jack & Jill of America and Mocha Moms to bring more resources to African American communities and draw powerful new voices to the mental health movement.

**ENRICHED COURSE CONTENT**

We expanded free education and support programs for Latinx participants, with many major programs now offered in Spanish. The newly translated Bases y Fundamentos de NAMI (NAMI Basics) was released, joining De Familia a Familia de NAMI (NAMI Family-to-Family), De Persona a Persona de NAMI (NAMI Peer-to-Peer) and our Spanish-language programming for support groups.

**LEADERSHIP TRAINING**

NAMI's annual Executive Directors Leadership Exchange event featured focused sessions on diversity, inclusion and equity, engaging senior leaders from across the country in a fruitful exchange of viewpoints and strategies.

**DIVERSE VIEWPOINTS**

In July, NAMI celebrated Bebe Moore National Minority Mental Health Awareness Month by sharing stories from diverse communities. Throughout the month, we published 13 blog posts filled with personal reflections, resources and coping strategies to address the barriers that minorities face all too often.

 **READ the blog posts at:**  
[NAMI.org/Blogs/NAMI-Blog/July-2019](https://www.nami.org/Blogs/NAMI-Blog/July-2019)

# Raising our voices for progress.

NAMI works with thousands of committed advocates who share their stories to ignite public awareness and engage public policy leaders in the mental health movement. Together, we fight to fund research, improve care, strike down discriminatory barriers and expand the mental health workforce.



NAMI worked with a bipartisan group of legislators on key components of the *Commander John Scott Hannon Veterans Mental Health Care Improvement Act of 2019*.





**Our hearts go out to those who are struggling,**

and we hope to move as quickly as we can to get them the help they need and deserve.”

**AJIT PAI**  
*Chairman of the Federal Communications Commission,* following the agency’s unanimous vote to establish a 9-8-8 mental health emergency crisis line

## **350,000 ADVOCATES STRONG**

In 2019, we continued to build systems that empower us to work effectively with advocates across the country. NAMI State Organizations worked closely with our national team to test new system integrations that will support fast, effective action at the state level.

## **9-8-8 FOR MENTAL HEALTH CRISES**

NAMI fought for a new, nationwide three-digit number, linked to the National Suicide Prevention Hotline, that would provide rapid responses for those experiencing a mental health crisis. Helped by 9,000 emails from NAMI advocates to Senate and House members, legislation to support 9-8-8 gained momentum in Congress.

## **SENATE TESTIMONY ON RED FLAG LAWS**

Members of Congress consistently rely on NAMI for expertise and perspectives that only those with lived experience of mental illness can bring. In March, we testified before the U.S. Senate Judiciary Committee on the use of extreme risk protection orders, also known as “red flag laws,” which help keep firearms out of the hands of people at risk of harming themselves or others. NAMI believes such laws should require clear evidence of risk so that people with mental illness will not be unfairly targeted.

## **BROADER CARE UNDER MEDICAID**

After our successful push to allow states the option to lift an exclusion that barred Medicaid payment for care in certain hospitals and residential settings, Vermont, Washington, D.C. and Indiana secured the first waivers to help people with mental illness.

## **DEFENDING PATIENT RIGHTS**

In 2019, NAMI worked tirelessly to protect coverage and benefits for people with mental illness. We partnered to fight proposals that would have denied Medicaid benefits to people who don’t meet work requirements. We also supported stronger enforcement of insurance parity and successfully fought harmful changes to Medicare coverage of psychiatric medications.

## **FIGHTING FOR AMERICA’S VETERANS**

NAMI partnered with the U.S. Senate Veterans Affairs Committee to introduce the *Commander John Scott Hannon Veterans Mental Health Care Improvement Act of 2019*, which would increase access to mental health care, fund new diagnostic research and authorize new programs to stem the tide of veteran suicides.



# Changing lives through no-cost, peer-led education and support.

In a nation where mental health resources can be hard to find, community-based education is vital. NAMI staff and volunteers come together to deliver a full slate of evidence-based programs that build knowledge, confidence and empowerment.



“

## **NAMI Basics OnDemand**

allowed me to view the materials on my own schedule and at my own pace. I have learned to be more prepared ... and as a result, supporting my loved one is much less daunting and intimidating.”

A FAMILY CAREGIVER



**This program was informative, healing and inspirational in every way possible.**

My anger and frustration have been replaced with a new understanding of mental illness. It also taught me how to care for myself and my veteran.”

A MILITARY SPOUSE WHO BENEFITED FROM NAMI HOMEFRONT IN 2019



**12,000 PEERS REACHING 420,000 PARTICIPANTS**

NAMI education and support programs reached a record number of people and families in 2019. We continued to improve course content, aiming to ensure that the information we present is clear and accessible to all. Effective training helped peer presenters build the skills needed to welcome and engage course attendees.

**NAMI BASICS GOES ONLINE**

In October, we launched NAMI Basics OnDemand, a new resource for parent and family caregivers of young people aged 22 and under. Nearly 5,000 people enrolled by year-end, affirming the need for youth-focused initiatives that families can access anywhere, anytime.

**NAMI HOMEFRONT PROVEN TO UPLIFT FAMILIES**

Our course for military spouses and families delivers proven benefits for online and classroom participants, according to a new study published in *Psychiatric Services*, a journal of the American Psychiatric Association. Researchers found that NAMI Homefront participants gained knowledge of mental health and effective caregiving strategies, empowering them to cope with psychological distress and improve family functioning.

 **READ** about NAMI Homefront at: [NAMI.org/Homefront](https://www.nami.org/Homefront)

**NAMI FAMILY-TO-FAMILY REFRESH**

Thousands of peer presenters suggested ways to improve the family-focused course originally designed by Dr. Joyce Burland, NAMI's first national director of education and support. The refreshed course was successfully tested in Arkansas, Florida, Ohio, South Carolina and Texas.

**NAMI GROWS ITS PRESENTATION PROGRAMS**

NAMI piloted *Sharing Your Story with Law Enforcement*, a new online training that prepares peers and family members to share their personal experiences with mental illness during law enforcement trainings. The program will fully launch in Q2 2020.

---

# Bringing support as close as your phone, computer or mailbox.

More than 150,000 people found resources, information and support through NAMI's national HelpLine in 2019. Staffed by volunteers aged 21 to 80 plus — all with lived experience of mental illness — the NAMI HelpLine handles questions that come in via phone, email, social media and mail. Compassionate listening, paired with a system that helps volunteers find mental health resources by zip code, ensures that people feel heard, respected and supported.

It took an average of 40 volunteers per week to respond to the calls, emails and written correspondence to NAMI's HelpLine.



# 2019 SNAPSHOT NAMI HelpLine



# 150,000

PEOPLE SERVED

**110,000**  
HELPLINE  
KNOWLEDGE CENTER  
VISITS

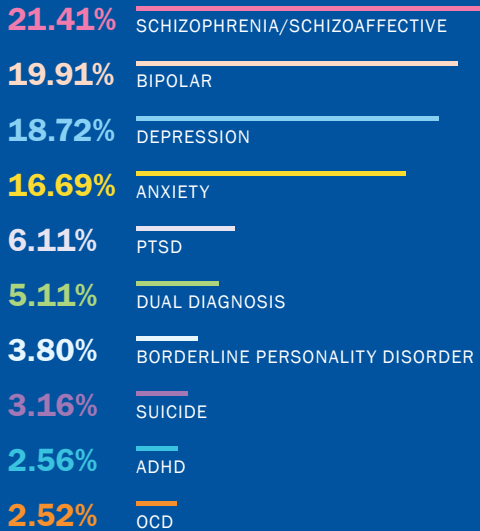
**31,000**  
CALLS

**3,000**  
EMAILS

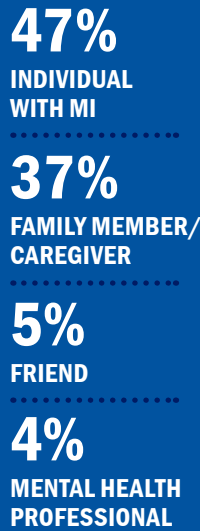
**1,000**  
SOCIAL  
MEDIA  
CONTACTS

**750**  
LETTERS

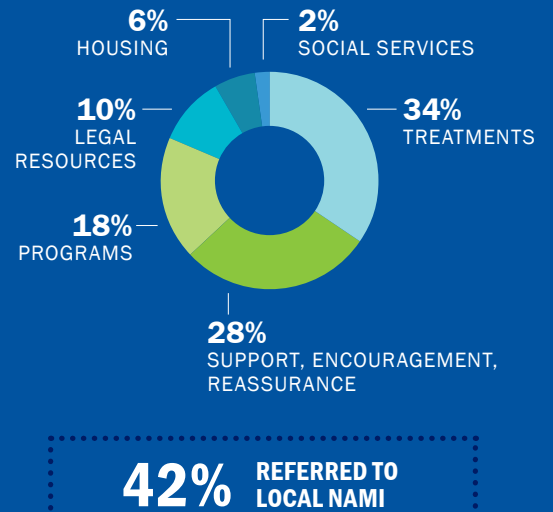
## CONDITIONS & CONCERNS ADDRESSED



## WHO WE HELPED



## HOW WE HELPED



## VOLUNTEERS



**40** VOLUNTEERS PER WEEK  
**100** VOLUNTEERS PER YEAR

**2,500** TRAINING HOURS  
**25 HOURS** PER VOLUNTEER

**10,000** VOLUNTEER HOURS PER YEAR

---

# Advancing research to improve the lives of millions.

NAMI fights to widen the funding pipeline that fuels new breakthroughs in mental health research. We also fund and direct our own studies, sharing key findings that reveal gaps in our health care system and elevate solutions.

HONORING  
OUR RESEARCHER  
OF THE YEAR

---

## Matcheri Keshavan, M.D.

---

Matcheri Keshavan, M.D., known throughout the world for his findings on the neurology of psychosis, received the 2019 NAMI Scientific Research Award at our *Inspiring Hope Through Research* event in November.

Dr. Keshavan has devoted his career to finding better ways to address first-episode psychosis. He is the Stanley Cobb Professor of Psychiatry at Harvard Medical School, Vice Chair of Psychiatry at Beth Israel Deaconess Medical Center and Senior Psychiatric Advisor for the Massachusetts Mental Health Center in Boston.



He serves as editor-in-chief of the Asian Journal of Psychiatry and is a member of the editorial board for Schizophrenia Research. NAMI is a proud supporter and promoter of his pioneering research.

## **\$98 MILLION GAIN IN FEDERAL FUNDING**

In 2019, NAMI worked with fellow advocates to seek expanded funding for the National Institute of Mental Health. We raised our voices for early intervention and evidence-based approaches to mental health care that deliver proven benefits for individuals and families.

## **COLLABORATING FOR BETTER CARE**

NAMI teamed up with the American Psychiatric Association to continue the development of SMI Adviser, a tech-based hub aimed at improving care for those with serious mental illness. This new tool links physicians, nurses, recovery specialists, therapists, peer support experts and others for broad, real-time collaboration and resource sharing.

## **ACCELERATING PROGRESS**

In partnership with the National Institute of Mental Health and the Stanley Center for Psychiatric Research at Broad Institute, NAMI hosted the 2019 *Advancing Discovery Summit* in April. Thought leaders from academia, industry, government and private research centers gathered to share perspectives and outline concrete action plans that will drive the search for new mental health treatments.

## **SHARING RESEARCH NEWS**

NAMI serves as a resource for people interested in brain science, genetics and mental health treatment, including new medications and care strategies. In 2019, we added a research portal to the NAMI website filled with insights from new studies as well as our own research.

 **VISIT** the research portal at:  
**[NAMI.org/Learn-More/Research](https://www.nami.org/Learn-More/Research)**

## **BRINGING MENTAL HEALTH FACTS TO LIFE**

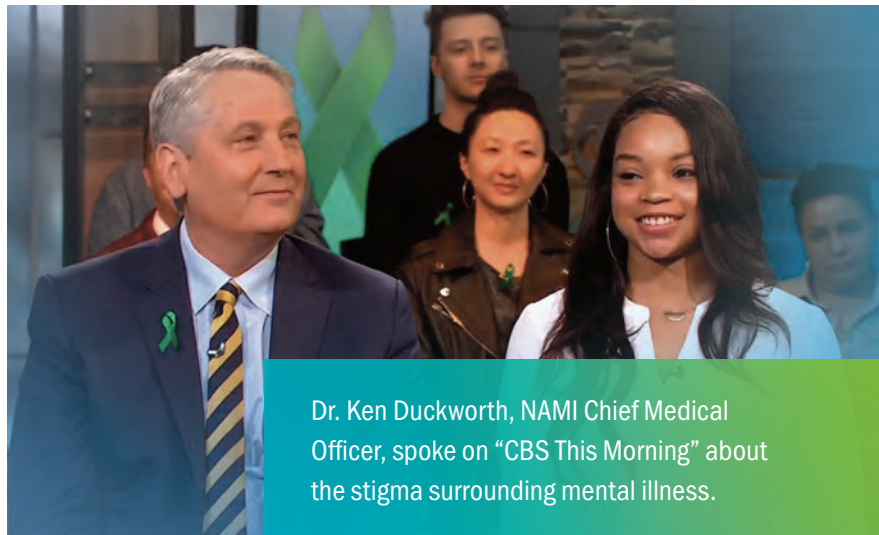
NAMI researchers completed a full update of the popular infographics that reveal patterns of mental health in the U.S., delays and barriers to effective care, warning signs of a mental health crisis and much more.

 **VIEW** the graphics at:  
**[NAMI.org/MHstats](https://www.nami.org/MHstats)**

---

# Breaking new ground in awareness, community and impact.

NAMI is leading the way toward a new understanding of mental illness and the urgent need for integrated care and support that empowers people to live their best lives. Our work supports the recovery, dignity and well-being of individuals and families nationwide.



Dr. Ken Duckworth, NAMI Chief Medical Officer, spoke on “CBS This Morning” about the stigma surrounding mental illness.

**In 2019, NAMI  
was mentioned in**

---

**NEARLY  
24,000 Stories**

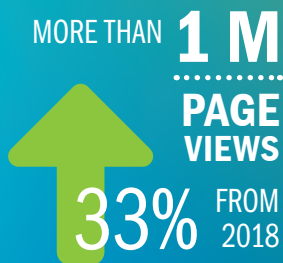
---

**shared by  
print, online and  
broadcast outlets.**

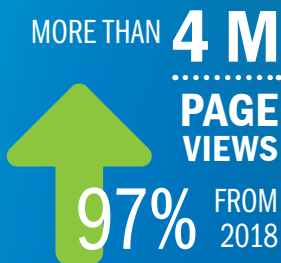


The NAMI Blog was named one of the “Top Depression Blogs of 2019” by Healthline, an online health information resource, showing just how important NAMI’s online reach is.

#### 2019 NAMI BLOG POSTS



#### NAMI BLOG POST ARCHIVE



## 714,400 SOCIAL MEDIA FOLLOWERS

NAMI’s social media following grew more than 30% as campaigns such as #WhyCare reached new audiences nationwide with a powerful call to end the stigma surrounding mental illness.

## 12.7 MILLION WEB VISITORS

NAMI.org is one of the nation’s leading resources for individuals and families looking for information and guidance on navigating mental health challenges. Traffic on our website rose 43% in 2019, with half of all visitors between 18 and 34 years of age, a strong sign that our youth outreach efforts are gaining ground.

## BLOGS SHARE DIVERSE VIEWPOINTS

Filled with mental health tips and engaging stories from peers, caregivers, family members, therapists, advocates and more, NAMI blog posts published in 2019 drew more than 1 million page views, a 33% increase over 2018. Our rich archive of past posts garnered more than 4 million page views, an increase of 97% over the previous year, ensuring that people with mental health conditions know that they are not alone and there is hope.

## HELPING MEDIA GET THE STORY

In 2019, NAMI was mentioned in nearly 24,000 stories shared by print, online and broadcast outlets, elevating the national conversation around mental health. Links in 1,150 published articles drove 25,250 visitors to our website, connecting them with our rich resources on critical mental health issues. Our national team responded to nearly 450 media inquiries, with thousands more handled by NAMI Affiliates and State Organizations countrywide.

## MORNING SHOW SPOTLIGHTS STIGMA

NAMI worked hand-in-hand with the producers of “CBS This Morning” on a special live-audience event, “Stop the Stigma: A Conversation About Mental Health.” The one-hour show aired October 23 featuring NAMI Chief Medical Officer Dr. Ken Duckworth, who shared the stage with “Queer Eye” star Karamo Brown and Cynthia Germanotta, mother of Lady Gaga. An interview with NAMI Acting CEO Angela Kimball also aired on CBS stations nationwide.

 **WATCH at:**  
[youtu.be/InCA1dF-Yfw](https://youtu.be/InCA1dF-Yfw)

## NEW DOCUMENTARY OPENS HEARTS AND MINDS

“Bedlam,” a full-length feature documentary produced and directed by Dr. Kenneth Paul Rosenberg, premiered at the 2019 Sundance Film Festival. The film offers a glimpse into the lived experience of people with mental illness who struggle to find effective treatment. NAMI is highlighted in the film, referenced on the film’s website and quoted on the jacket of the companion book, which was released in October.

 **LEARN MORE at:**  
[BedlamFilm.com](http://BedlamFilm.com)

# Growing the impact of our strategic alliances.

NAMI benefits from the support of respected brands and partners who amplify our message and bring new resources to fuel our mission.

NAMI Ambassador Taraji P. Henson attended Lord & Taylor's *Charity Days* benefiting NAMI.



Rachel Bloom supported NAMI's mission with an online auction of her wardrobe and memorabilia from her TV show "Crazy Ex-Girlfriend."




In an episode of NAMI's "Strength Over Silence" docuseries, Chris Hubbard spoke to high school students about his own mental health struggles.

## 46 BRAND PARTNERS

Leading brands in retail, finance, the service sector and more joined with NAMI to fight workplace stigma, broaden awareness and support our mission. Retailer Lord & Taylor raised nearly \$500,000 for NAMI at the premiere of their *Charity Days* event, with revenues supporting our Affiliates and State Organizations in participating Lord & Taylor markets. Guests at this exciting event included actress and author Taraji P. Henson, an influential NAMI Ambassador.

## 42 AMBASSADORS AND INFLUENCERS

Celebrities from film, sports, music, entertainment and the arts shared their mental health stories with millions, garnering new attention and support for NAMI. In July, NAMI released the latest in our "Strength Over Silence" docuseries, featuring Chris Hubbard, a football player for the NFL's Cleveland Browns. He spoke about the challenges of playing competitive sports and encouraged young people to take their mental health needs seriously.

 **VIEW** the documentary at:  
[NAMI.org/StrengthOverSilence](https://www.nami.org/StrengthOverSilence)

## CELEBRITY AUCTION BENEFITS NAMI

In November, Emmy-award-winning singer, writer and actress Rachel Bloom launched an online auction of wardrobe items and memorabilia from "Crazy Ex-Girlfriend," her show on The CW, with proceeds supporting our mission.

## HBO ENGAGES MILLIONS

In a significant move to fight stigma and expand the conversation on mental health, HBO added content alerts to programs that depict mental illness. Viewers see NAMI's website and a dedicated HelpLine number they can contact, 833-HBO-NAMI. NAMI also partnered with comedian Gary Gulman on his first one-man HBO show, "The Great Depresh," sharing his experiences of major depression.

## WIZARDS SHOOT FOR WIDER AWARENESS

On November 20, NBA professional basketball team the Washington Wizards welcomed a packed house to their game with the San Antonio Spurs, with \$5 from every ticket supporting NAMI's #StigmaFree campaign and our national HelpLine.

## NEW MEDIA PARTNERSHIP

iHeart Media, a leading global media and entertainment company, teamed up with NAMI to share original content through "Let's Talk," a campaign focused on mental health. NAMI information and resources are now part of iHeart Media's platforms, helping to raise awareness and strengthen our nationwide presence.



## A BRAVE CONVERSATION ON YOUTH MENTAL HEALTH

---

NAMI partnered with **AshleyAKAAshley**, a streamer on the gaming platform Twitch, to share fresh perspectives on mental health with her followers. More than 2,000 gamers tuned in when Ashley invited **Elizabeth Babkin**, an avid gamer and volunteer presenter for NAMI Ending the Silence (ETS), to join her in a live conversation via Twitch.

Revealing their mental health struggles and the coping strategies that work for them, the hosts invited listeners to share their own stories. Elizabeth, who has created a guide to youth mental health services in her home state of Minnesota, spoke about ETS, NAMI's national presentation program for students, families and school staff in secondary schools.

This partnership was a powerful demonstration of how reaching out through alternative media platforms can help NAMI reach a younger and more diverse audience.

**Revealing their  
mental health  
struggles...  
the hosts  
invited  
listeners to  
share their  
own stories.**

# Engaging more people and raising more dollars than ever.

In 2019, NAMIWalks welcomed more than 80,000 participants in 103 locations countrywide, raising a record \$12.5 million for our mission.

A first-ever social media campaign supporting our events reached more than two million people with messages of hope and healing. We also produced a 30-second public service announcement that earned 10 million impressions through broadcast stations nationwide.

**80,000+**  
**PARTICIPANTS**

**103**  
**LOCATIONS**

**\$12.5 M**  
**RAISED**



# Heartland events build on a legacy of caring.

In 2011, **Doris and Luther Kloth** sought a way to remember their son Eric, who spoke openly about his struggles with schizoaffective disorder as an active volunteer with NAMI Greater Milwaukee before his death in 2010.

Since founding their team, “Remembering Eric Kloth,” the duo has raised more than \$150,000 for NAMI, with Doris emerging as a gifted fundraiser. “I don’t have large donors, but I write letters to family, friends, community groups and all the people who knew our son.” Even small donations add up in a big way, she says.

Doris boosts results by selling handmade mittens fashioned from recycled sweaters. She attracts team members by offering chocolate chip cookies and the opportunity to add the names of loved ones living with mental illness to the poster the team carries at the event.

As NAMIWalks chair in Greater Milwaukee for seven years, Doris has gained broad community support. After appearing on “Morning Blend” with local NBC TV host Molly Fay, Doris convinced Molly to serve as NAMIWalks emcee in Milwaukee, which she has proudly done for the past four years.





“

**Knowing those donations provide advocacy, education and support for others gives us hope that the stigma will end.”**

CONNIE BIGLER

When her son Trevor died by suicide after years of living with depression and bipolar disorder, **Conni Bigler** sought to turn her grief into healing. She is now celebrating her 12th year as the captain of “Trevor’s Team,” walking for NAMI Green County in Madison, Wisconsin.

Conni became a NAMI volunteer in 2007, joining her Affiliate board two years later. She now serves as board treasurer and works year-round to gather donations, coaching fellow walkers on the best ways to expand their fundraising efforts.

Friends and family return to “Trevor’s Team” year after year. Many were young and single when they began, but now push strollers with their spouses along the walk route near Lake Monona. Around 40 team members — including family from three distant states — raised \$12,300 for NAMI in 2019, lifting the team’s lifetime total above \$70,000.

“Getting to say Trevor’s name day after day as we work to eliminate the stigma involved with mental illness is a great healer,” Conni says. “Knowing those donations provide advocacy, education and support for others gives us hope that the stigma will end.”

# 2019 Board of Directors



## EXECUTIVE COMMITTEE

**PRESIDENT**  
**Adrienne Kennedy, M.A.**  
*West Lake Hills, Texas*

**FIRST VICE PRESIDENT**  
**Shirley J. Holloway, Ph.D.**  
*Anchorage, Alaska*

**SECOND VICE PRESIDENT**  
**Vanessa Fernandes**  
*Dallas, Texas*

**TREASURER**  
**David Stafford, M.S.**  
*Simpsonville, South Carolina*

**SECRETARY**  
**Carlos Larrauri, MSN, APRN,  
PMHNP-BC, FNP-BC**  
*Miami, Florida*

## BOARD OF DIRECTORS

**Judge Joyce A. Campbell**  
*Fairfield, Ohio*

**Lisa R. Carchedi, M.D., M.S. C-IAYT**  
*Havre de Grace, Maryland*

**Charma D. Dudley, Ph.D., FPPR**  
*Pittsburgh, Pennsylvania*

**Jim Hayes, M.D.**  
*Greer, South Carolina*

**Amanda Lipp**  
*Sacramento, California*

**Captain Stacey L. Owens**  
*Simpsonville, South Carolina*

**Micah Pearson, CPSW**  
*Las Cruces, New Mexico*

**Steve Pitman**  
*Lake Forest, California*

**Tracy Plouck**  
*Radnor, Ohio*

**James “Jim” Reiser, MBA, M.A.**  
*Gainesville, Florida*

**Catherine “Carrie” Roach, M.S.**  
*St. Paul, Minnesota*

**Back row (left to right):**  
David Stafford, Steve Pitman,  
Micah Pearson, Catherine  
“Carrie” Roach, Capt. Stacey  
Owens, Carlos Larrauri,  
Jim Hayes.  
**Front row:** Charma Dudley,  
Judge Joyce Campbell,  
Adrienne Kennedy,  
Shirley Holloway, Vanessa  
Fernandes, Lisa Carchedi,  
Amanda Lipp.  
**Not pictured:** Tracy Plouck,  
James “Jim” Reiser.



# NAMI Ambassadors



Utkarsh  
Ambudkar



Elise N.  
Banks



Andrea  
Barber



Beartooth



Maurice  
Benard



Mayim  
Bialik



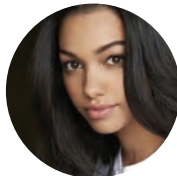
Rachel  
Bloom



Sterling K.  
Brown



Kelsey  
Darragh



Corinne  
Foxx



Clark  
Gregg



Taraji P.  
Henson



Chris  
Hubbard



Jamie Gray  
Hyder



Brooke  
Johnson



Naomi  
Judd



Aija  
Mayrock



Rachel  
McCord



Dawn  
McCoy



A.J.  
Mendez



Mauro  
Ranallo



Frank  
Shamrock



Morgan  
Stewart



Jay  
Stolar



Alessandra  
Torresani



Tritonal



Kota  
Wade



Wil  
Wheaton



DeWanda  
Wise

# NAMI

## Corporate and Philanthropic Partners

A+E Networks  
Acadia Pharmaceuticals Inc.  
Adobe  
Aegis Media Americas, LLC  
Aetna Foundation  
Albertsons  
Alkermes  
Allergan  
Allergan Foundation  
Anthem, Inc.  
Anthem Foundation  
Association for Accessible Medicines  
Astellas US, LLC  
AWE  
Bearaby  
Beacon Health Options  
Biotechnology Innovation Organization  
Bristol-Myers Squibb  
Boehringer Ingelheim  
The Boeing Company  
CAMI NYC  
Canyon Manor  
CARF International  
Counter Logic Gaming  
College of Psychiatric and Neurologic Pharmacists  
Capital One Foundation  
Centene  
Corcept Therapeutics  
Cosmopolitan Magazine  
DaVita Inc.  
D.R.E.A.M. Clothing

Eleven Seven Music  
Enhanced Music  
Euromonitor International  
EY  
FedEx  
Freddie Mac  
Fusion Medical Staffing  
Genentech  
GoFundMe  
GSN Games  
HCA Foundation  
Healthline Media, Inc.  
Home Box Office  
The Hudson's Bay Company / Saks Fifth Avenue  
Hulu  
iHeart Media  
Indivior PLC  
Instagram  
Intra-Cellular Therapies Inc.  
Janssen Pharmaceuticals  
Kaiser Permanente  
Kamp Grizzly  
Kenneth Cole  
LA Fitness  
Lord & Taylor  
Luca + Danni, Inc.  
Lundbeck United States  
Magellan Cares Foundation  
MantraBand  
Marriott Foundation  
The May and Stanley Smith Charitable Trust  
MedCircle

Mental Health Management, Inc.  
Merck & Co.  
Michelin Charity Golf Tournament  
Monumental Sports & Entertainment  
Myriad Genetics  
NBCUniversal  
NCAA  
Neurocrine Biosciences  
Neuronetics  
Norkol Inc.  
Omaze  
Otsuka Pharmaceutical  
Participant Media  
Paylocity Corporation  
Pfizer Inc.  
philosophy  
PhRMAPLUS1  
Publicis Health  
Revolutions Per Minute  
Salata  
SHOWTIME  
Sloomoo Institute  
Sunovion Pharmaceuticals, Inc.  
Supernus Pharmaceuticals  
Takeda Pharmaceutical Company  
Therapy Appointment  
Teva Pharmaceutical Industries  
Venable Fitzpatrick  
Wear Your Label

# 2019 Leadership Alliance: Major Donors & Family Foundations

*We are grateful for the support of all NAMI Leadership Alliance donors, including many who choose to remain anonymous.*

Dennis Abbott	AmeriChoice Health	Alexander Backes	Lucas Beattie
Grace Abbott	Services, Inc.	Jackie Badders	James Beatty
Richard Abrams	Sue Amundson	The Elliott Badgley Foundation	Jerome Beauchane
David Abramson	Tricia Anbinder	Karl Baer	Diane Louise Becher
Karen Achenbach	The Anbinder	Amy Bahcall	Tim Bechmann
Kenneth Ackerman	Family Foundation	Emily Bailey	Eric Bechtel
Mary Adamczyk	Terry AnCel	Jeff Bailey	Susan Bechter
Betsy and David Adams	J. Sue Anderson	Megan Bailey	Clifford Bechtold
Gail Adams	John W. Anderson	Charles N. Bajart, Jr. American	Mary Beck
Kristine Adams	Linda and John Anderson	Legion Post 1122	Melinda Beck
Terri R. Adams	Charitable Foundation	Bakalar Family Charitable Fund	Laure Becker
Alice J. Adcock	Oscar Anderson	at Schwab Charitable	Peggy Beckham
Dominick Addario	Angerman Foundation	Paul Baker	Jory Beckman
Jodi Adkins	Anonymous Funds of MCF	Robert Baker	Judith Beckman
Anne Adkisson	Lynda Antonelli	Hollie Baker-Lutz	Vahe Bedian
Peter Adler	Joseph Antonowicz	Lori Balaban	Christina Bednorz
Carol Adragna	James Apple	Susan Balding	Apolonia Beebe
Advocate Health Care	Judith Appleby	Stacie Ballard	Chackravarthy Beeman
Stephanie Afful	Suzanne Arabian	Andrew and Patricia Balter	Allan Beetle
Arash Afshar	Diane Arber	Neelesh Bangalore	Elinor Beidler Siklossy
Kenneth Agema	Joyce Arciniaro-Kruegor	H. Barber	Foundation
Saumya Agrawal	C. Kent Argenta	Carolyn Barelli	Francis Beidler Foundation
Bartholomew Aguayo	Polapat Arkkrapridi	Myriam Barenbaum	Mark Belknap
Family Fund	Syd Arkowitz	and Jon Miller	Whitney Bell
Heath Ahrens	Anne Armour	Deborah Barger	Robert and Arleen Belyea
The Aids Institute, Inc.	Stan Arner	Jean Barger	Frances Bendana
Jason Aird	Tina Arnold	James Barker	Gene Benedetto
Thomas Alberg	David S. & Elizabeth B.	Mary Barneby	Paul Benkeser
Allen and Elissa Alchian	Arnott Family Fund	Andrea Barnett	Gail and Dean Bennett
Stephanie Alcivar	Nicole Aron	James W. and Norma K.	Marsha Bennett
Aldersgate United	Stephen Aronson	Barnett Fund at	Marc Benoff
Methodist Church	Gwen Art	the Wilderness Trace	Sharon Benoff
Mark and Idajean Aldous	Matthew Arthur	Community Foundation	Stephanie Benson
Gregory Aldridge	Gerry and Frances Ashe	James Barnhart	Linda Berger
Constance Alesse	Mark Aspenson	Eugene Barr	Sheri Berger
Kimberly Allen	Judith Asselin	Barr Charitable Foundation	Linda Bergher
Nancy Allen	ATC-NY	Maggie Barreto	Karen Berk
Rebecca Allison	Russ Atha	Barretta Family Foundation	Joan Berkowitz
Alpha Delta Kappa Foundation	Mandie Aubrey	Rodney Barstein	Jesse Berlin
Alpha Kappa Alpha Sorority,	Thomas and Barbara Auer	David Bartz	Marjorie Berman
Inc. (Alpha Xi Omega Chapter)	Susan Auerbach	Hollis Batterman	Cathy Bernard
Maria and Randy Altmayer	Faye Austin	Jean Batthany	Stacey Berner
Karla Alvarez	Enrique and Jennifer Aviles	Anthony Battista	Thomas Bernstein
Amanda Alves	Alan Axelson	Heather Battle	Stacey Berry
James Aman	Brandon Ayers	Julia Baum	Tricia Berry
Jean Ambler	Kathy Ayoub	Michelle Bautista	Kathy and Steve Best
Sheila Amdur	Robert Ayres	Robert Baxter	Beta Sigma Phi
American Foundation	Monica Azpeitia	The Beach Club	Guy Beutelschies
American Immigration	Jeffrey Baab	Merian Beagle	Stacy Bevan
Lawyers Association,	Tim Babbert	Diane Beal	Rahul Bhatnagar
Philadelphia Chapter	David Bach	Deborah Beards	Ann Early Bibb

Ann Bigelow  
Janet and Richard Birnbaum  
Brent Bish  
Marilyn Bittan  
Roger Bjornstad  
Kathryn Blackburn  
Patricia Blackman  
Hillie Blackshaw  
Alvin Blank  
Maureen Blilie  
Linda Block-Coalter  
Harold and Jeanne Bloom  
Duane and Judy Bloomquist  
Kelly Blough  
Paul Blough  
Theodore Blumenthal  
Giving Account  
Janet and Donald Boardman  
Elizabeth Bodisch  
Eric Bodner  
Frederic and Jeannette Bogart  
Bohemian Brewery & Grille  
Midvale, Inc.  
Mark Bohnsack  
Caleb Boise  
Bill Bolding Giving Fund  
Pamela Bollinger  
William Bolster  
Jason Booth  
Richard Bornstein  
Craig Borowsky  
Borowsky Agency, Inc.  
Katherine Bosch  
Lorraine Bosche  
Mike Bott  
Jan Bottcher  
Virginia and Charles Bowden  
Carolyn Bowen  
Heath Bowling  
Bonnie Bowman  
Sharon E. Bowyer  
Chris Boyd  
James Boyd  
Stephanie Bozic  
Betsy Brach  
Norma Brach  
Christophe Bradberry  
John Bradley  
Mary Bragg  
Patricia Brande  
The Brandeis School  
of San Francisco  
Heidi Brandemuehl and  
Steve Lee Barndemuehl  
Kelli and Stephen Brannan  
Stephen Brannan  
Marsha Brauen  
Ida Braun  
Susan R. Braunwald  
Charitable Account  
Melody Brawley  
Madeleine Breen  
Carolyn Breihan

Katherine Brendish  
Catherine Brennan  
Hibbs Brenner Family Fund of  
The Minneapolis Foundation  
Terry Brensinger  
Julie Breskin  
Margaret Bresko  
Peg and John Breslin  
Devra Breslow  
Douglas and Susan Brewer  
Aricka Bridges  
Terry Bridges  
Adam Brill  
Vicki Broce  
Robert Brogan  
John and Teresa Broghammer  
Amanda Brown  
Charles E. & Dorothy K.  
Brown Foundation  
Claire and Hubert Brown  
Deborah Brown  
Donna Brown  
Elizabeth Brown  
G. J. Brown Charitable Trust  
Geraldine Brown  
Glenn and Margaret Brown  
Roger Brown  
Seong Brown  
Spencer Brown  
Janet and William Brownstein  
Allison Bruce  
Dan Bruce  
Eugene Bruce  
Kay Bruce  
Robert J. and Laura L.  
Bruce Charitable Fund  
Ginger Brudos  
Monica Bruegl  
Robert Brumley  
Michael Brumsted  
Katherine Brune  
Barry Bruns  
Hoke Brunson Jr.  
James Norman Bryan  
and Sylvia M. Bryan  
James Buck  
Peter and Leonie Buckley  
Frederick Buckner  
Sara Budish  
James Budke  
Sandra Buehler  
Bonnie Bufkin  
Judy and Gerry Bukowski  
Kristy Bulleit  
Braeden Bumpers  
Kathryn Bunn  
Jeffrey J. and Mary E.  
Burdge Charitable Trust  
Allan and Mary Burdick  
Ellen Burgess  
James Burgess  
Char Burkett-Sims  
Joyce and Sascha Burland

Alexandra Burns  
Jennifer Burns  
Philip Burns  
The Elizabeth Burnside Post  
Charitable Fund  
Kathy Burrell  
Pam Burrell  
Chris Burton  
Rachel Bush  
William J. Bushfield Jr.  
Rafael Bustos  
Rosalie Bustos  
Steven Butler  
Martha Butner  
Mary Buysse  
Kathy Byington  
John Byrne  
Stephen Byrne  
Linda Byron  
Kye Byun  
Michael and Tania Cahill  
Richard and Laurie Calder  
Delois Caldwell  
Joan Caly  
Maryann Camardo  
April Cameron  
Matthew Cameron  
Barbara-Jean Campbell  
Glenn Campbell  
Joyce Campbell  
Maryclaire Campbell  
Timothy Campbell  
Joe Campolo  
Laurie Canfield  
Thomas and Irene Caniano  
Deanna and Willson Cannon  
Valerie Cantu  
Laine Capaccio  
Stacie Caplan  
Joseph Caprio  
Paul Carey  
CARF International  
Sara Carlberg  
Douglas Carlson  
Lyle Carlson  
Carney Family Fund  
James and Maureen Carroll  
William N. Carroll  
Carleen Carter  
Janan and Alan Carter  
Mike Carter  
Nickolas Carter  
Kristin K. Casado  
Sue Caslava  
Anthony Cassidy  
Consuelo Castro  
Rebecca Castro  
Nancy Cavender  
CC of OP, Inc.  
Gary Cederquist  
Center for Change  
CGI Technologies  
and Solutions

Marc Chadwick  
Beth Chambers  
Anita Chang  
Joseph Chang  
Mardie Chapman  
Chapman and Cutler LLP  
Beth Charas  
Charitable Foundation USA  
Charles River Associates  
Jeremy and Christine Chase  
Christella Chavez  
Benny Chen  
Jenny Chen  
Sabrina Cherry  
Irene Chin  
William Ching  
Vanessa Chionchio  
Ram Chirimunj  
Wilson Chow  
Chowdy Foundation  
Gunnar and Susan  
Christiansen  
Barbara L. Chuko  
Nancy Church  
Susan Church  
Church of the Holy Trinity  
Tim Cinalli  
Kristine Cippa  
Circle K International  
at Adelphi University  
Michael Ciullo  
Evelyn Clair  
Erica Clark  
Lee Anna Clark  
Sheila Clark  
Sherren Clark  
John Clarke  
Theresa Clarke  
Susan Clarke-Mahoney  
Lila Clayman  
Janet Clayton  
Mabel Claytor  
Cathleen Cleary  
Charles Cleeland  
The Cleveland Foundation  
Patricia W. Cliff & Karl Von  
Frieling Foundation  
Paul E. Clouser and Anne C.  
Clouser Foundation  
Kristen Coates  
Natalie Coburn  
Leo F. Coffey  
Patrick Coffey  
Deborah Cogan  
George Cohee Jr. Foundation  
Allan Cohen  
Austin Cohen  
CB Fund  
Jace Cohen Giving Fund  
Lauren Cohen  
Manny and Ruthy Cohen  
Foundation, Inc.  
Marcy Cohen

The Nancy Y. and Martin Cohen Family Charitable Fund	Lloyd and Suzanne Crawford	Carmel Deckelman	Amy Domingo
Nelson Cohen	Elisabeth Crosby	Anne Decker	Jonathan Donahue
Stacey Cohen	Earline Cross	Phyllis Dedoes	William Donley
Cole Industrial, Inc.	Theodore Cross Family Charitable Foundation	Deely Giving Fund	Patrick Donlin
Alice Coleman	Charles and Mary	Marilyn DeGrasse	James Donnell
Wendy Coleman	Crossed Foundation	Gannon Degumbia	John Donnelly
Marilyn R. Coll	Chuck Crotser	John DeJean	Mike Donohoe
Joyce and John Collins	Ann Crouch	Teri DeLano	Patrick Donohue
Ruth Colman	Philip and Lisa Crow	Michael DeLaurentis	Scott Donohue
Michael and Carla Colton	Michael Crutcher	Julian DeLehman	Thomas and Mary Donohue
Michelle Colvard	Balazs Csaki	Jean DeVecchio	Robert Doran
Christine E. Comer	Charles Cudd	Jacque DeMarco	Pamela Dorman
Rachel Comfort	Juanita and Paul Cullen	Robert and Jill Demaster	Sam Dorman
Joseph Comito	Sheila Cullen	Demery Family Foundation	John Dorminy
Kari Commagere	Patricia Culpepper	Frank Demmerly	Jan Dorr Freeman
The Conaty Family Fund of the Ayco Charitable Foundation	Mark Cunard	The Andrew and Diana Dempsey Charitable Fund	Melanie Dorsey and Daniel Standish
Conboy Family Fund of The Minneapolis Foundation	John Cunnally	Gerard and Joan Dempsey	Nancy Doschadis
Alice Conconi	Nancy Cunningham	John Dempsey	Ellard Douglas
Brandon Conder	John H. Curley	Mary E. Dempsey	Randon Doverspike
Renee and Lawrence Conell	Paul and Patricia Curran Foundation	Denbury Onshore, LLC	Barbara B. Dowd
The Conerly Family Fund of the North Texas Community Foundation	Gary Curwin	Thomas Denio and Laura McKee	Jonathan Downey
Sandie Conner	Burt and Diana Cutler Family Foundation	Kevin Dennis	Andrew P. Doyle
Janet Conomy	Charles Cycon	Christine DePaul Weisser	Debra Doyle
Cathy Conrad	Sandra Dabney	Christine Deriso-Dame	Julia Drake
Consumer Cellular	D'Agostino Family Foundation	Robert and Cathy Dern	Draperies by Dorothy
June Conway	Joseph P. D'Angelo Foundation, Inc.	Donor Advised Fund	Robert H. Drapeau
Connor Conyngham	Barbara Dahl	Louis DeSantis	Revocable Trust
Charles Cook and Priscilla Ellis	Richard Dahl	Jeffrey Desich	The Dreman Foundation, Inc.
Jane Cook	Dorothy Dake	Isabella Detwiler	John Dreyer
Charlotte Cooksey	Anita Dale	Erin Devine	Eric Dreyfuss
Mary Cooney and Edward Essl Foundation, Inc.	Ellen Daley	Mark Dexter and Deborah Cowley	Michael DuBose
Robert and Loretta Cooney	Nadeem Dallal	DGLipp & Associates, LLC	Glenn Ducat
Amy Cooper	Veronica L. Daly	Nirmala Dharmaraja	Charma Dudley
Shelley Cooper	Peter Danbury	Martha Diamond	Edward Duff
Stephen Cooperman	Dancing Tides Foundation, Inc.	Benny Dickens	Janet Dufilho
Karen Corbid	Vanessa Dang	Ian Dickerson	Sean Duhaime
Karen Corby	Susanne J. Daniell	Kenneth A. Dickson	Laurie Dulson
Francis Corcoran	T. Daniels	Pamela and Roger Dickson	Dune Jewelry, Inc.
Paul Corliss	Thomas, Jillian and Lia Darling	Pamela Dieckman	Bob and Gail Dunham
Molly Cornell	Nathan Darrow	Robert Diefenbacher	Esther Dunhoff
Cornerstone Advisors, Inc.	Elizabeth and Kent Dauten	Liane Dietrich	Gale and Sandy Dunlap
Sherry Cornett	The Ronald and Joan David Foundation, Inc.	R&K Dietz Charitable Fund	Andrew Dunn
Rolando Correa	Gerald Davidson	Lisa and David Diffley	Anita Dunn
Steve Cossack	Gary Davis	Diana Digges	Beth Dunn
Keith Cowan	Lenore Davis	Anthony Diliberto	Keeley Dunn
Edwin Cowen	Michael Davis	Joseph Dimberio	Ronald G. Dunn
Cox/Sager Giving Fund	Norma Davis	Martin Diner	Richard Dunne
Kelly Cox	Richard Davis	Jake Dinkel	Elvis Duran
Koriann Cox	Shawn Davis	Jacquelyn Dinvault	Valerie Durrant
Joseph T. and Genevieve S. Coyle Charitable Trust	William Davis	Ryan Dinwiddie	Brian Dusablon
Barbara Coyne	The Milly and Horace Dawson Charitable Fund	Ken and Susie DiPaolo	Sharon Dworkin Bell
Judy Craig	Dayton Foundation Depository	Delano Dixon	Mary Dyer
Rebecca Craig	Nancy De Fren	Marcy and Barry Dobil	Elisabeth Dykens
Richard Crake	DeRosa-Roudebush Fund	John G. Dobrez	Dottie Dykers
Brian Crandall	Craig Dean	Beth Dobson	Michele Dyson
James Crane	John and Nancy Debenham	Judith Doerr	Joanne and Dennis Eagan
	Robert DeBoy	Dave Dogan	Pamela Eagan
		Carol Dolan	Eakins Properties
		Karen Dolins	Pete and Patti Earley
		Nancy Domenici	Mary Early
			Earp Family Fund
			Pat East

Ingrid Eberly	Mark Ewing	Josephine Fleishman	Suzan Ganjei
Ronald Echandia	Willard Ewing	Austin Fleming	Bijan Ganji
Beatrice Eckertson	Ezor Charitable Fund	Carol Flint	Alicia Gans
Kathie Eckman	Shannon Faaborg	Daniel Floriza	Catherine Gardner
Donna Eddy	Ricki Jane Faber Charitable	Barbara and Raymond Flunker	Christopher Gardner
Bennett and Janet Edelman	Remainder Unitrust	FlynnBoyle Family Fund	Charles Garner
Rebecca Eden	James Fagan	Allen Fogel	Jean M. Garner
John Eder	Jeff Fallacaro	Randall Fojtasek	William Garner
Marilyn Edington	Julie Falther	Robert Folberg	Alison Gary
Edison Electric Institute	Family Involvement Center	John Fontaine	Marcela Gary
Jacob Edling	Nora Farber	Elaine Fontana	Joseph Gassib
Jane Edmisten	Jay Farbstein	The Elster Forbes Foundation	Jennifer Gave
Jessica Edwards	Lynette Farinas	Patricia Forbes	James Geib
Richard Ehrler	Donald Farnan	Fordham Preparatory School	Jayne Geiger
Daniel J. and Edith A. Ehrlich	Breege Farrell	Karolin M. Ford-Trojan	Gelber Foundation
Family Foundation	David and Laurie Farrell	Paul E. Forkash	Eric Geller
Ronald Eidshaug	Katie Farrey	Kristina Foss	Judy Gentile
The Ekinland Family	Yvette Farris	Karen Foster	Patricia Geoghegan
Irit Eliyahu	Keith Fawcett	Lisa Foster	Meg Gerken
Linda Ellin	Lois Feinblatt	Don Fowls	Gershon Equities, III LLC
Jesse Elliott	Linda Feist and Roger Junnila	Lawarence Fox	Gertz-Pellicane Family Fund
Karen Elliott	James Feit	Leslie Fox	GI Panorama
Rebecca Elliott	Dan Feldstein	Todd Francisco	Robert A. Giannasi
Lucille Ellis Simon Foundation	Charles and Denise Felice	Luisa Francoeur	Giant Industries, Inc.
Charles and Margaret Elmer	James and Tammy Felt	Barbara Frank	Chantelle Gibbs
Elon University	Marcy Felter	Richard Frank	Nancy Gibbs
Thomas Emery	Pat Felter	Franklin Mutual	Mary Gibson
John Emison	Kevin Feltes and Monica Allison	Insurance Company	Sherri Gibson
Jane Endres	Giving Fund	Ted and Gail Frapolli	Kimberly Gilbreath
Claire Engers and	Elizabeth Fender	Judith Fraser	Elizabeth and Donald Gilchrest
David Silberman Family	Amy Feng	James Frazier	Shane Gill
Foundation	Rebecca Fenton	Frederic W. Cook & Co., Inc.	Peter Gillie
Diana England	Kelly Ferenc	Stephen and Barbara Fredman	C. Bernard Gilpin
Lois and Richard England	Sylvia Fergus	Jono Freeman	Rudy Gingerich
Family Foundation	Susan Fern	Lucile Freeman	Rebecca Girtman
Engle-Rifkin Charitable Fund	Lori Fernandes	Erin Freiberg	Grace Giuffre
Brooke English	Robin Ferneau	John and Gioia Frelinghuysen	Arnold Glaberson
Nina and Mark Engstrom	Carol Ferrandino	Peter and Mary Virginia Frenzer	John Glasfeld
EOS Foundation	Walter Ferris	Marilyn Frerking	The Glickenhau Foundation
Melvin and Rachel Epstein	Susan Field	Barbara Frey	Patrick Glynn
Jon and Sarah Erdman	Sue and Chuck Fienning	Fried, Frank, Harris, Shriver	Kristin Glywasky
Joe Ergonis	Elizabeth Fieweger	& Jacobson LLP	Goelet Family Foundation
Lynn Ernst	Pamela Fillo	Hallie and Stew Friedman	Anna Maria Golcic
Toni Espera	Jeri Finard	Jeanette Friedman	Liza Gold
Gene A. Esswein	DJ Findley Family Foundation	Benjamin Frieling	Kathleen Goldammer-Copeland
Estate of Amy Hyman	The Fine Foundation	Kevin Fryatt	Marlene Goldfarb
Estate of Celeste Clement	Fire Policy City County	FS Transportation, LLC	Cornelius Golding
Estate of Eugenia West Ferrell	Anne Fischer	Joanne Fuentes	Andrew Goldman
Estate of George J. Russ	Brigitte Fisher	Patricia Fuller	Robert Goldstein
The Estate of June Sailor	Casey Fisher	Ian Funk	Robin Goldstein
Estate of Ronald J. O'Daniel	Ellen K. Fisher	Richard Furniss	Barbara Golson
Estate of Warren Young Smith	Chad Fitness	Thomas Furth	Nancy Gomes
Estate of Winifred M. Witt	Alice Fitzgerald	Valentin and Maria Fuster	Julio and Ana Gomez
Marcia Estes	Five Points Foundation	Susan Gabay	Foundation
Cynthia and Ronald Estridge	Five Star Sheets, LLC	The Gabrielsen Family	Melody Gongwer
Elizabeth Estrine	Richard Flaherty	Terri and Joseph Gaffney	Greg Gonzalez
Ettinger Family Charitable Fund	Beth Flanagan	Virginia Gager	Javier González
at Schwab Charitable	Mindy Flanigan	Ana Gagnon	Marjorie Gonzalez
Barry Evans	Evan Flaschen	Michael Galatis	Mary Ellen González
Devin Evans	Flash Merch, LLC	Andrew Gale III	Gary Goodgear Emergency
John Evans	Judith Flath	Paula and Brian Gallagher	Assistance Foundation
Anita and Allen Everett	Fleetcor Tech	Rita and Hugh Gallagher	Robert Goodman
Eversana	Operating Co., LLC	Michael Gaming	Sharlene Goodman

Alysha Goodwin and Neil Whitbeck	Marlene Guthrie	J. Scott Haynes	Ronald S. Honberg
Debra Gordon	Edward R. and Mary Kay Haben	Andrea Hazlitt	Kessely Hong
Ellen Gordon	Richard Ruby and Catherine Habiger	Kathryn Head	David and Rosemary Hopkins
Jeffrey Gordon	Chris and Connie Hadley	Belinda Heard	Janice Hopkins
Tipper Gore Family Foundation	Dan Hadley	Jackie Heath	Mark Hopwood
Michael Goris	James Hagar	Roger F. Heegaard	Patricia Hornick
Thomas Gorman	Carol Hagel	David Hegarty	Joan Hornig
Jennifer Gover	Patrick Hagiwara	Michael Heger	Sari Hornstein
Marilyn and Rene Grace	The J. R. and P.M. Hahn	Mary Ann Heimann	Craig Horowitz
Wayne Grace	Charitable Gift Account	Patrice Heller	The Hosanna Foundation, Inc.
Robert R. Graci	Diana Hake	Valerie Henchel	David Hoselton
Patsy Graham	The Orvid Gail Halane Revocable Trust	Cynthia Hendrix	Jacqueline Houston
Carol Grant	Kandy Haldeman	Mary Henkel	Albert Howard
Craig Grant	Anne Hall	Janet Henning	Donald and Marita Howard
Madeleine Grant	Jim and Diane Hall	Matthew Henningsen	Sean and Caroline Howard
Mary and John Grant Foundation	Janine Halloran	Merideth Henry	James Howe
Rebecca Grant	Marilyn Halonen	Benjamin Henry	Howell Family Charitable Foundation
Brett Gratz	Joyce Ham	The Henry Foundation	Laura Howrey
Linda Graves	Corrina Hamann	Gary Henschen	Maureen Hoyer
Thomas Gravina	Margaret H. Hamer	Ann Herbert	Catherine Hubbard
Allison Gray	James Hamilton	Valerie J. Herman	Mary Hubbard
James Gray	Tom and Carolyn Hamilton	Euler Hermes	Mary Hubbard
Alan Gray	Barbara Hancock	J. William Hernandez	Phil Huffman
Gray Family Charitable Fund at Schwab Charitable	Aaron Hand	Jonathan Hernandez	Marion Hunt
Michael Graziano	Ruth Hanenkratt	Suzan Hernandez	Michael Hunt
John Green	William Haney	Kelly Herther	Abraham Hunter
Kathleen Green	John and Karen Hangartner	Julie Hessler	Laura Hunter
Marjorie L. Green	Michelle Hankins	Michael Hexner	Raquel Hunter
Francis Greenburger	Patrick Hanley	Alan Heyl	Ken Hurley
Joel Greenspan	William Hanlon	HFO Investment Real Estate	Donald Hurula
Betsy Greer	Nancy Lyons Hannick and Steven Hannick	David and Mary Hibdon	Martha and Ken Huston
Hilda Greer	Barbara Hanrahan	Kathy Hibler	Renea M. Hutchings
John Greiwe	Jody and Jens Hansen	Richard Higger	Kevin Hutt
Catherine Grewell	Mikkel Guldborg Hansen	Doug Hilberman	Keren Hymo
The Earl and Shirley Greif Foundation Trust	Greg Hanson	Kathy Hildenbrand	Ruth Ann Hyson
Mary Griesedieck	M. Beth Hardy	William and Annette Hill	Dale and Sandra Illig
Bernadine Grieshop	Mary Hardy	Nathan Hill	Joseph Impullitti
Anna Griesmer	Joan Hardy-O'Brien	Saralee Hillman	Sven Ingard
Lacey Griffin	Charles Harker	David Hills	Alison Ingersoll
Dick and Ruth Griffin	William F. Harnisch Foundation	Jason Hines	Shelli Ingram
Linda Griffith	Lorine Harr	The Hinman Foundation	The James and Sheila Ingram Fund
Keith Grimmett	Jennifer Harris	Dennis Hinrichsen	Elizabeth Ingriselli
Bonnie Grizzard	Tricia Harris	Norman Hirsch and Ann Courter	Interfraternity Council of Michigan State University
Frank Grobman	The William H. Harris Foundation	Richard and Joyce Hirsch	Mari Irby
Jacob and Wanda Grossman	Mary Jo Harrison	Robert Hirsch	Lori Ireland
William Grossman	Margaret Hart	Sarah Hixson	Carmen Irizarry
Reed Group	Richard L. Hart	Arline Hoel	Andrea Irvin
Douglas Grove	James Harter	Elizabeth Hoenig	Joan Isaac
Steven B. and Elizabeth S. Gruber Philanthropic Fund of the Jewish Communal Fund	Thomas Hartford	Donna Hofer	Susan Isaacs
Robert Grummel	Katharine Hartley	Christine Hogan	Erika Ishii
The Grunberg Family Fund	Christopher Hartman	Lora Hogan	Ivy Family Fund
David and Margie Guggenhime	Kerry Hartmann	Rodney Holcomb	Johnnie Izquierdo
Ruthie and Claude Guidroz	Nancy Hartung	Rita Holder	J.J.B. Hilliard, W.L. Lyons, LLC
John Guiney	Roger F. Haskett	Conrad and Jeanne Holling	Jack and Jill of America, Inc.
Thomas Guins	Ann Hathaway	Harry Holloway	The Jack and Marilyn MacAllister Foundation
Joanne Gundersen	Paul and Cheryl Haupt	Shirley Holloway	Gerald Jackson
Gusfield Charitable Fund	Robert Haverkamp	Cheryl Holm	Robert Jackson
	Chris Hayes	David Holman	Judith Jacobs
	James Hayes	Home Instead Senior Care Trusted Care at Home, Inc.	Dennis and Betty Jacobson Charitable Fund
		Susan Homsher	
		Roger Honbarrier	

Ken and Debbie Jaffe	Robert Kaliski	Arfa Khan	Marilyn Kravitz
Laura Jamar	Gina Kamentsky	Katrina's Kids Day Fund	Doug and Wendy Kreeger
Alfred James	Judith Kaminetzky	Yvonne S. Kilbourne	Carol Kresge
Ann James	Jody Kaminsky	Robert J. Killen	Sue Krolikowski
Walter James	Elaine Kanas	Heather Killough Foundation	Gretchen Kroll
Ricardo Jamin	Tyler Kanczuzewski	Leanne Kilmnick	Jennifer Kruger
Patricia Janicek	James Kandell	Tim Kilpin	David A. Krunnusz
Tom Jardine	The Morton and Merle Kane Family Philanthropic Fund	Lynn and Jim Kimble	Bonnie Krystal
Charles Jasicki	Barbara Kane	Donald F. Kimmel	Marilyn Kucharski
James Jaskot	Abaraham Kaner	Bevinn King	Karin and David Kuhns
Derek Jaskulski	Niranjala Kanesathasan	Jon King	Anirudh Kulkarni
Helane Jefferson	Julia G. Kant	Peter King	Peggy Kurland
Mychal Jefferson	Kaplan Family Foundation	Andrea Kingsley	Linda Kurth
Mervyn and Marcia Jeffries Charitable Fund	Kappa Kappa Gamma University of Utah	Kay Kingsley	Kurzman Eisenberg Corbin & Lever, LLP
Christopher Jellen	Elizabeth Karacuschansky	Colleen Kinnear	Carolyn Kwalick
Anna Jenefsky and Wynn Segall	Charlotte Karls	Robert Kinney	Shuk Kwan
Craig Jenkins	Parsa Kashani-Nejad	Kinschner Family Foundation	Herbert and Lai Kwok
Jessica Jenkins	Joan Kasner	Jacob Kinsman	Miwon Kwon
Jeff Jenks	Hallie Kassin	Lenore and William Kirby	Allyn Kyes
The Jersey City Public Schools	Jessica Kasten	Matt and Shirley Kirby	Karen Kyle
Amanda Jesionowski	Rajeev Kasturi	Paull and Nita Kirkpatrick	Patricia La Noue
Jiun Hu Foundation	Laura Katz	Kirkpatrick/Pilling	Nina Lacombe
JNK Group, Inc.	Michael Katz	Joseph and Jacqueline Kirshbaum Memorial Fund	Valerie Lafleur
Bradley Johnson	Dana Kauffman	Rebecca Kirshenbaum	L'Aiglon Foundation - TAJ
Carol B. Johnson	Laura and Steven Kaufman	Stephen Kirwan	Marion Laiso
Cindy Johnson	Jasmine Kaur	Wally Kissel	W. Wayne Lake
Daniela Johnson	Sukhpreet Kaur	Elyse Klein	Kai Lam and Bonnie Buratti
Joel Johnson	Fuat Kavak	Margaret Klein	John Lamb
Kenneth Johnson	Brian Kearney	Rachael Klein	Tracie Lamb
Johnson Giving Fund	Charles Keating	Ari Kleinman	Wilson Lamb
Linda Johnson	Jody Keating	George M. Klett	Susie Landes
Marilyn M. Johnson	Doug and Luci Keazer	Timothy Kloppenbor	Thomas Landrus
Sally Johnson	Joanne Keenan	Susan Klueger	John Lane
William and Laurel Johnson	Christian Keesee Charitable Fund	Pam Knight	Paul Lane
Kevin Johnstone	Tom Keiser	Larry Knorr	Scott Lane
AD Jones	Robert Keisling	Kobak Family Philanthropic Fund of the Jewish Communal Fund	Kathaleen and Kenneth Lang
Ann Jones	David Kellman	Kelsey Kobayashi	John Langione
Anna Jones	Suzanne Kellom	Rosemary J. Koberlein	John Lanzilotta
Hannah Jones	Linda Kelly	Julianna Kobs	Inbal Lapid
Jack Jones	Susan Kelly	Elizabeth Kochar	Jill Lapidis
Kirk Jones	Judith Keltner	Deborah Koeffler	Julie Larcheveque
Mark Jones and Michelle Rusk Fund	Pete Kemme	Kristopher Koehnen	Anne Larin
Charlotte Jordan	Mark Kemper	George and Jutta Kohn	Brian Larsen
Pequita Jordan	Charles and Frances Kempler Foundation	Peter Kolker	Jean Larson
Shelly Jordan	Marguerite Kendall	Mark and Terry Koller Family Fund	Ross Laser
Yvonne Jordan	Laurie Kenfield	Jacqueline Kolm	Nancy Lasik
Bernadine Joseph	Suzanne Kennan	John Kolodziejewski	Ashleigh LaThrop
Suzanne Juday	Adrienne Kennedy	Julia Korenman	Stephen Latter
Brian Judd	Barbara Kenney	Charles Korn	Jo Anne Laughlin-Maloney
Michelle Judson and George Barry Hembree Charitable Giving Account	Justine Kent	Ronald Korte	Henry and Yvonne Laun Family Trust
James Julig	Leslie Kenyon	Kotecha Family Fund	Deborah Laupheimer
Eva Juni	Kaaren Kerlin	Wanda Kownacki	Denise Lauria
Victor Jury	Emily Kern Metz	Steven Kozlowski	Wendy Lavallee
Jenny Just	Patricia Kerr	Daniel Kraemer	Matt Lavine
Brittany Kaback	Sandra and Jacques Kerrest	James Kramer Family Charitable Fund	Linda Lawler
Karen Kafer	Matcheri Keshavan	Ellen Krantz	Timothy Lawler
Lucy Kahlms	Nadine Kessler	Helen Kraus	Jasper Lawson
Bob Kalani	Rosemary Kessler	Benjamin Kravitz	Chris Leahy
Bill Kalish	Jacque Khalil		Leigh Anne Leas
			Rachel Leasure
			Dolores Leavitt



Hannah Leckman  
 Abbott Lee  
 Amanda Lee  
 Caitlin Lee  
 Cheng Lee  
 Hal Lee  
 Jin Lee  
 Kirk Lee  
 Marjorie Lee  
 Roland Lee  
 Lee Family Foundation  
 Janice Lee-McMahon  
 Stacy Leeper  
 Anthony Leggett  
 William and Sandra Lehman  
 The Leibowitz and Greenway  
 Family Foundation  
 Angela and Charles Leins  
 Hanne Leloup  
 Barbara Lemanski  
 Stephen Lenehan  
 Mary Lepley  
 Nels Lersten  
 Anne Lesser Lufrano  
 Daniel H. V. W. Lessin  
 K. Lester  
 The Letzler Family Fund of the  
 Ayco Charitable Foundation  
 Robert Leveridge  
 Daniel Levin  
 Andrew Levine  
 Elana Levites Agababa  
 Howard Levy  
 Karen Levy  
 Daniel Lew  
 Allison Lewis  
 John and Judith Lewis  
 Doris Lewis  
 Anna Leyshon  
 Liberty Hill Foundation  
 Sarah Lichtner  
 Neil Liebowitz  
 Ginger Liemohn  
 Christopher Liesmaki  
 Amy Light and Michael Robins  
 Karen M. Lind  
 William Lindsey  
 Jo Link  
 John Linn  
 Joseph List  
 Robert Lister  
 Litman Weinberg  
 Charitable Fund  
 Anna Liu  
 Tally Liu  
 Chris Livergood  
 Corinne Lloyd  
 Judi Loberg  
 Jennifer Lochner  
 Tyrone Lockhart  
 Kia Locksley  
 David Lococo  
 Michael Loehrke  
 David Loewe  
 Carol Loggins  
 Logistick  
 Katherine Lohn  
 Daniel Long  
 Warren Long  
 Colin Longmuir  
 Loomis Foundation  
 Brandon Lopez  
 Betsy Lord  
 Robert and Nettie Losey  
 Anahita Lovelace  
 David C. and Lura M. Lovell  
 Foundation  
 Mark and Eileen Lovell  
 Watson Lowery  
 Loyola University Chicago  
 Dave Lu  
 Luca + Danni, Inc.  
 Vincent Lucente  
 Claire Ludwig  
 Ludwig Family Fund  
 Pamela Lugos  
 Christine Lukasevicz  
 Lynette Lum  
 The Lumabel Charitable Fund  
 Jean Lund  
 Ted Lundin  
 Marc D. Luros  
 Robert Maas  
 Patricia Macholl  
 Sheila and James Mack  
 Bruce MacLeish  
 The MacMillan Family Fund  
 Caroline MacQueen  
 Jill Madden  
 Darlene Maggi  
 Jerry Magone  
 Magowan Family Foundation  
 Carrie Mahan  
 The John F. Maher  
 Family Foundation  
 Cynthia Mahoney and  
 Randolph Ross  
 Mary Ann Mahoney  
 Maids of Athena Grand Lodge  
 Susan and Anthony Maiello  
 Makefield Software &  
 Technology Services, LLC  
 The Chris and Melody  
 Malachowsky Family  
 Foundation  
 Amanda Malaguti  
 Carl Malcolm  
 Katherine Malik  
 Mary H. Malone  
 Dennis Maloney  
 Judith Malott  
 The Jeffrey Mandell and Abigail  
 Jones Charitable Fund  
 Samuel P. Mandell Foundation  
 Linda Mann  
 Selvi Manoharan  
 Cale Manor  
 Janice Marchiafava Hogan  
 Darlene Marcroft  
 Bruce Marcus  
 Jeffrey Marcus  
 Leo Marcus  
 Sherri Marcus  
 Sylvia Marion  
 Elka Marish  
 Tom and Marilyn Marker  
 Charitable Giving Fund  
 Susan Markovich  
 Roger and Delores Marks  
 John Markve  
 Marrassini Charitable Gift Fund  
 at Schwab Charitable  
 Sally Marrell  
 Marriott Daughters Foundation  
 Cydney Marsico  
 Michael Martella  
 James Martin  
 Neil Martin  
 Steve Martin  
 Jimena Martinez and  
 Michael Hirschhorn  
 Adam Martter  
 Jason Marx  
 Martita Marx  
 Rick Marx  
 Lisa Maska  
 Phyllis Maslow  
 Andrea Mason  
 Heather Mason  
 Josiah and Jean Mason  
 Scott Mason  
 Massachusetts Institute  
 of Technology  
 Andrew Masse  
 Zora Mateo  
 Richard and Linda Matheny  
 Brad Mathiowetz  
 Jeremy Matloff  
 Garland Mattox  
 Allan Matusevich  
 Roy Maute  
 Christine and Fred Maxfield  
 Tom Maxfield  
 Mary Maxwell  
 G. B. & M. May Foundation  
 Ellen Mayer  
 McAllister Family Foundation,  
 a Donor Advised Fund of The  
 U.S. Charitable Gift Trust  
 Bonnie McCabe  
 Laura McCabe Casey  
 Jeremy McCallum  
 John McCarten  
 Ann and Ed McCarthy  
 William and Cheryl McCartney  
 Nicole McCauley  
 Thomas Joseph McConnell  
 Christopher McCormack  
 Liz McCormack  
 Jean McCormick  
 Kim I. McCracken  
 The Linda K. McCrery  
 Charitable Fund  
 Joel McCrory  
 McCullough Construction  
 Thomas McDonagh  
 Valli McDougale  
 Mike and Karen McDowell  
 Suszi McFadden  
 Donald McFarland  
 Doug McGillivray  
 Russ McGillivray  
 Mary McGlinn  
 Stephen McGovern  
 Brigid McGrath-Massie  
 McGuinn Family Fund  
 John McGuinness  
 John J. McGuire Jr.  
 Chris and Philip McHugh  
 Douglas P. McHugh  
 Thomas McIntee  
 Gordon and Meridith McIntosh  
 Chartiable Fund  
 Sean McIntosh  
 Ruth McIntyre  
 Robert and Elizabeth McKay  
 Michael McKee  
 The Paul F. and Mary  
 Anne McLaughlin Family  
 Foundation  
 Joe and Paula McManus  
 Jane McMillan  
 Wendy Mcmillan  
 Todd McMillion  
 Lynn A. McNabb  
 Blaine and Anne McPeak  
 Laurel McPherson  
 Dan McReynolds  
 Jim and Kelly McShane  
 Natasha McVeigh  
 Gordon McWilliam  
 and Sigrid McWilliams  
 Patricia McWilliams  
 Theodore and Anne McWilliams  
 Jennifer Mead  
 Joseph and Johanna Meara  
 Mechanical Contractors DBA  
 MCA of Southern Indiana  
 Mark Meckes  
 Alicia Megowen  
 Peggy Melanson  
 Lore and Ray Meline  
 Sara Meltzer  
 Menasha Corporation  
 Terry Menegay  
 Alper Mercan  
 Mercer Chicago Office  
 The Mercer Family  
 MERCER US, Inc.  
 Meriwest Credit Union  
 Megan Merlo  
 John Mertens

Marlene Mertens	Jackie Montoya	Hanna Newell	Janet O'Malley
Sue Mertens	Lisa Moon	Maryam Newman	John and Rena O'Malley Fund
Justin Mervis	Cynthia Moore	Michelle Newman	at Schwab Charitable
David Jeffrey Merwin	Hilary D. Moore	John Newsome	Brian O'Mara
Meson Sabika	Ryan Moore	Bethany Nguyen	One On One Basketball, Inc.
Louis Messer and	The Sonya Moore-Wells &	Henry Nguyen	Randall O'Neil
Helen Messer	David Wells Charitable Fund	William Nguyen	Allison O'Neill
Charitable Foundation	David Mooso	Barbara Nickerson	Marthe O'Norwick
Deborah Metroka	Juan Mora	Ross Niebergall	Ann E. Onymous Foundation
Susan Metz	Sydney Morgan	Arthur C. Nielsen, Jr.	The Jesse H. Oppenheimer
Elizabeth Meuser	Donald and Betty Morganstern	Family Charitable Trust	& Susan Oppenheimer
Marjorie Meyer	Jay Morgenstern	Mark and Yasyn Lee Niemer	Foundation
Quentin Meyer	Lea Ann Moricle	The Nirvana2457 Fund	The Lynn and David
Wanda Meyer-Price	Scott and S. Jane Morrill	The Fred I. and Gilda Nobel	Oppenheim Family Fund
Wendy Meyers	F. Craig Morris	Foundation, Inc.	Oppenheimer & Co., Inc.
Kimberly Meyers-Wirtz	Amy Morrison	Joan Noble	Daniel Oppenheimer
Charitable Account	Todd Morrissette	Linda Nobles	Nancy Orbison
Rabah Mezenner	William Mosakowski	Nonstop Administration	James O'Reilly
Lisa Miao and Wing Hung Weng	Donna Moschetti	and Insurance Services	Mary Orfield
David Michael	Susan Moskwa and	Noom Fund	Donna Orosz
Jan Mitchell	Nick Gerner	John Nordin	Mary O'Rourke
Jackie Michels	Charles F. Moss	Calle Norman	William Ortega
Kenneth Michelson	Steven Moya	Jean Norman	Linn Osborn
Miecznikowski Family	Candida Moyet	Melissa Norman	Becky Osborne
Gift Fund	MSI Management Services, Inc.	Kristina Norris	David and Stephanie Osser
Linda Mielke	Duane Muehlbrad	Northern Highlands Regional	Taylor Ostmark
Sandy and Gary Mihelish	Carol Muir	High School Interact/	Dianne Osullivan
Garrett Milam and	Cristina Mullen	Rotary Club	Esther Ovadia
Jennifer Deselle-Milam	Peter and Kathleen Muller	Richard Norton	Victoria Owen
Mary Jane Milano	Family Fund, an advised fund	Christopher Noto	Owen Valley High School
Paul Milbury Family Fund	of Silicon Valley Community	Carol Novick	Tony and Ethel Jo Paap
Joe Miller	Foundation	Addie Null	Simone Pace
Kathleen Miller	Brian Mulroy	Karen Nusbaum	Shankar Padmanabhan
Kyle Miller	Mark Murawski	Travis Nutzman	Padre Pio Secular Franciscan
Lynne Miller	Brian Murchison	Lisa Nydick	Order Fraternity
Mark Miller	Erica Murdock	Teresa O'Neal	Mina Paik
Nancy Miller	Mary V. Murfey	James Oakum	The Palayam Foundation
Paul Miller	David L. and Lauren C. Murphy	Bill and Karen O'Brien	David Palmer
Ria Miller	Denise Murphy	Paul O'Brien	Lauren Palmer
Richard Miller	Paula Murphy	Susanne O'Callaghan	Carla Palmore
Ryan Miller	Timothy Murphy	Kyle O'Connell	Simone Pan
Miller-Furst Family Trust	Ernestine W. Murray Charitable	Carolyn O'Connor	Karen Pandula
Lauren Mills	Remainder Unitrust	Kate O'Connor	Alexandria Panehal
Milne Family Charitable	Nicholas Murray	Kathleen Odell	Katharine Panfil
Gift Fund	Ferdinando Mussa-Ivaldi	Diana and Jeff O'Donnell	William Parente
Maida Milone	Colin Myer	Jacklyn O'Donnell	Liza Parenti and
Cynthia Mirsky	Christopher Myers	Carol Oettinger	Mark McNamara
David Mishko	The Marlene Joyce Nally Trust	Donna L. Ogle	Manish Parikh
Mission Flavors and	Steven Napolitano	James and Teresa Ogle	Daniel and Linda Park
Fragrances, Inc.	Eileen Nash	Bunmi Okanlami	Bonnie Parker
Andy Mitchell	Cathy Nason	Gerard O'Keefe	Gary Parker
Lisa Mitchell Charitable	National Academy of Elder Law	Ruth O'Keefe	Keith and Kathleen Parker
Foundation	National Christian Foundation	Jill and Brad Okun	Rich Parker
Mark and Karen Mitchell	The National Institute for	Claire O'Laughlin	Parry/Frey Family Fund
Kim Mitchell	the Clinical Application of	Brendan O'Leary	Marilyn and Richard Parsley
MMS PHCG Brand	Behavioral Medicine	Pat O'Leary	Warren L. and Lorraine L.
Jim Mode	National Institute of Health	Kenneth Richard Olfert	Passmore Charitable
Kimberly Moening	NECI	Rozanne D. Oliver	Gift Fund
Danielle Mojo	Richard Neel	Gloria Olsen	Marli Pasternak
Jacqueline Monash	Jessica Nelson	Jason Olshefsky	Daniela Pastor
Tanya Mongitore	Michael Nelson	Cleojean Olson	Dilip Patel
Geoff Montgomery	Rosemary Nelson	Paul Olson	Gokul Patel
Janet Montgomery	Virginia Nelson	The Olson Family Foundation	Purvi Patel



Diego Patterson  
Patterson Demarest Fund  
Robert Patterson  
Kathleen Pattis  
Laura-Hill Patton  
Maki and James Paulson  
Justin Pava  
Randall Pavlock  
Paypal Charitable Giving Fund  
PeaceHealth  
Shella Pearce  
Andrew Pearlman  
Lenore Pearlman  
Edwin and Katherine Pearson  
John Pease  
Mary Pedrosa  
Elinor Peel and Ralph Alan  
Samir Pendse  
Jim and Susie Perakis  
Sheryl Perdew  
Alexander Perez  
Monica Perez  
Sophie Perisc  
Derrick Perkins  
Robert Permut  
Clarisse B. Perrette  
Virginia and Jean R.  
Perrette Fund  
Juliette Perry  
Mary Perschy  
Beverly H. Peterman  
Juandalyn Peters  
Susan Petersen  
Janet Peterson  
Richard and Donna Peterson  
Amy Petkanas  
Carl Petrillo  
Sandra Petron  
Erik Phelps  
Chris Phenicie  
Lee Phillips  
Rob Phillips  
Angela Pica  
Pick Charitable Account  
Virgilio Pilola  
Galina Pinow  
Zeidee Pineda  
Karen Pingarron  
Lindsay Pinkham  
Allistair Pinsof  
Lauren Pinter Brown  
Larry and Nancy Piotrowski  
Matthew Piphon  
Frank Pirozzi  
The Pittsburgh Foundation  
Linda Plaskota  
Julie Platt  
Laurence Platt  
The Platt Family Foundation  
David Platus  
The Pletcher French Fund  
Linda Plitkins  
Ela Plow

Vicki Plutchok  
Shashi Polavarapu  
Brittany Polevikov  
Ayelet Pollner  
Barry Pondell  
Linda Pontious  
Marie Ponzetti  
James Poole  
Tom and Betty Pope  
Madeline Popelka  
Michael Poppler  
Ann Porcella  
Anthony Pordes  
Jeffrey Porro  
Pastorfield Trust  
Lester Poretsky Family  
Foundation, Inc.  
Pepe Portuondo  
Potthoff Family Foundation  
Bonnie Powell  
Norman Powell  
Thomas Powell  
Julie and James Power  
Rosanne Power  
Karen Powers  
Susan Heather Poynter  
PPD Development, LP  
Patricia Pratchett  
Steven Pratt  
Praxair, Inc.  
Stacey Prezel  
Ed Price  
Susan Price  
Theresa Price  
Mark and Joan Prinsen  
Anthony and Jeanne Pritzker  
Family Foundation  
Stephen Proell  
Professional Risk Management  
Services, Inc.  
Allison Provost  
Jacob Pruitt  
William Puchlevic  
Alex Pulley  
Grant Pulver  
Robin Pulver  
Upendra Puntambekar  
Kenneth and Rona Purdy  
Rachelle Putnam  
Mary Sue Putzulu  
Pyle Family Foundation  
The R.H. & A.Q. Lawe  
Foundation  
Sheila and Thomas Rabaut  
The Rabinowitz Family Fund  
John Rabon  
Mary Pat Radeka  
Laurie Radin  
Patricia M. Radloff  
Bill Radue  
Barbara Raff  
Rally Health, Inc.  
Evelyn Ralston

Mukesh Ram  
Carlos Ramos  
Donna Ramos  
Lorene Randich  
Mark Rapaport  
Joe and Jan Rashid  
Pamela Rask  
Sara Ravenscraft  
Kimberly Rawlings  
RayLign Foundation  
Daphne Rayment  
Ronald Rayner  
Tara Re  
Susan F. Read Charitable  
Giving Account  
Stephen Ready  
John and Ashley Reckford  
The Redante Family  
Foundation  
Jayasree Reddi  
Rishika Reddy  
Harriet Redlich  
Rebecca Redman  
Charles Reed  
Randy Reed  
James Reesman and  
Alison James  
Monique Regard  
Dirk Rehder  
Annette M. Rehmke  
Charles Reilly  
JM Reilly Charitable Fund  
Theresa Reilly  
Maria Reimann  
Victoria Reina  
Ali Reineck  
Ann Reinhard and Fred Kelsven  
Linda Remensnyder  
Remondi Family Foundation  
Barbara Renbaum  
The REO Foundation, Inc.  
William Resch  
Jill Reslock  
Michael Resnick  
Jonathan Reyhan  
Timothy Reynolds  
William Reynolds  
Donnalee C. Rhodes Trust  
Dorothy Rhodes  
RHS Foundation  
Barbara A. Ricci  
Marilyn K. and Joe Ricci  
Karla Rice  
Jean Richardson  
John and Becky Richardson  
Sarah Riddle  
Nancy Rieger  
Kevin Riley  
Jay and Lisa Ring  
Charitable Fund  
Louise Rinn  
Anne Rios  
Margaret Ris

Alfred Ritter  
Desiree Ritter  
RJKB Family Charitable  
Foundation  
Carrie Roach  
Robert W. Baird & Co.  
Incorporated  
James L. Roberts  
Terry Roberts  
Andrew Robertson  
Fred Robertson  
Jessica Robertson  
John Robertson  
Susan Robertson  
Terin Robertson  
Amy Robeson  
Greg Robillard  
Cindy Robinson  
Tobias and Elaine Robison  
Fayan Rochowiak  
Frances Rockey  
John Rodger  
Betty Rodriguez  
Anna Roe  
Linda Rogen  
Pat Rogers  
Rebecca Rogers  
Paula Rogovin  
Kristen Rohm  
Keith Rohman  
Michael Rolfe  
Jeanne Rollison  
Teri Ronk  
Kathleen Roper  
Alan Rosenberg  
Brian Rosenberg and  
Martha Stevens  
Steve Rosenberg  
Bruce and Lori Laitman  
Rosenblum Family Fund  
Leonard Rosenfeld  
Dutch C. Ross III  
Richard and Jane Ross  
Stephen Ross  
The Rosskam Family  
Giving Fund  
Rotary Club of Great Neck  
Foundation  
Kimberly Roura  
Julie M. Rousseau and  
John B. Penney  
Florence L. Rowe  
Gary Ruben  
Denise Rubenstein  
Robert J. Rubenstein  
Ruth Rubenstein  
Sheila Rubin  
Marilyn Rubright  
Ann Ruchhoft  
Jennifer Rudolph  
David Rumohr  
Tom and Judy Rundle  
Michael Rush

Vivien Russe	Norman and Dee Schnake	Thomas Shimmel	Christopher and
Nancy Russell	Jan Schnaper	Henry Shin	Patrice SobECKi
Doug Russo	Thomas Schnitzer	Jenny Shin	Steven Socha
RustyBrick Charitable Fund	Steven Schoenecker	Marion Shipley	Social Good Fund
Barbara Ruvel	Julia Schonfeld	Wesley H. and	Nikki Soich
James Ryan	Charles Schottenstein	Jeanne R. Shirk Jr.	David Sok
Kate Ryan	Peter and Gwyneth Schroeder	Adam Shively	Peter Solderitsch
Judy and Jerry Ryckman	James Schubert	Jack Shlachter	Lawrence Solomon
Tamar Rydzinski	Celia Schuchman	David Shofman	Paul Solomon
Scotti Rylands	John Schuessler	David and Carrie Shook	Randall Solomon
Cynthia Sachs	David Schulman	Steve Shorr	Charlene Sommers
Greg and Rochelle Sachs	Brian Schultz	Karlton Showe	Rosa Son
Paul Sacks	Kristin Schultz	The Ellen and Ron	Salli Song
Tamara Sacks	Robert Paul Schulz	Shulman Family Fund	Jordan Sorensen
Edie Sadowski	Wayne and Joyce Schut	James Shupe	William H. Soskin
Tony Safoian	Helmut Schwab	Frances and Ralph Shuping	Jan H. Soucier
Sage Therapeutics	Susan Schwab	Eric Shuster	SoulCycle
Prasad Saggurti	The Frances Schwartz Belasco	Kevin Shyne	Marilyn Soule
Reuben H. and Beulah S.	Charitable Fund	Hamid Sial	Michael Spack
Saideman Fund	Gary and Angela Schwartz	Gail Sider	Carol Spalding
The Saint Paul Foundation	Schwartz Family	Elizabeth Siegel	Matthew K. Spector
Nelson Salabarria	Charitable Fund	Paula Siegel and	Mary Speed-Perrri
Susan Salice	James Schwartz	Jerry Radinoff	Susan Spindler
Howard Salita	Samuel Schwartz	Vanessa Siegel	Maya Spivak
Susan Salka	Teri Schwartz	Sally Sievers and Anil Nerode	Laura Spoerri
Maan Salloum	Lee Schwebel	Betsy Sihner	Isaac Sprague
Roger Salomon	Joann Schwentker	The Sikand Foundation, Inc.	Barbara Spring
The Sampson Foundation	Belkis Sclafani	Eileen F. Silber	Spring Family Trust
Katherine Sanborn	Shelly Scott	Steven Silva	Springstone, Inc.
Sandhill Family Fund	Tricia Scrivner	Barbara Silver	Carole Spurrier
Sanford C. Bernstein	Eric Scruggs	Patricia Silverwood	Vilas Sridharan
& Co., LLC	Theresa Seabaugh	Tim Silvius	David Stafford
Kurt Sanger	Greg Searson	Terri Simard	Jimmy and Louise Stallings
Jaya and Surya Sankaran	Betty Seay	Rosemary Simmons	Shirley Stamen Jaffe
Beth Sapiro	Lara Sebastian	Brian Simnick	Stan and Suzanne
Dushyant Saraph	Carolyn Sefcik	Rosario Simpson	St. Pierre Foundation
Gwendolyn Satre	Dorothy and Henry E.	Sinclair Prosser Law, LLC	Stance, Inc.
Leslie Sauer	Seibert IV	Richard Singer	Michael Stanley
Annie Saylor	Richard Seleno	Jeffrey Sirota	Memorial Fund
Lorrie Scardino	Alfred Selgas	Kathleen Sitarik	Maria Stanton
Laurel Scarlata	Kellie Selinka	Douglas Skarstein	Donald Stark
Darren Schack	Margaret Sellars	SKB Foundation	Cindy Stavitsky
Schaefer Donor Advised Fund	Louis Sellers	Joanna Skinner	Jaime Stearns
George Schaefer	Raymond L. Sementini	Polly Slavet	Steel Dynamics, Inc.
Wendy Schaefer	Richard Serra	Sarah Sloan	Steele Family
Elizabeth Schafer	SGP Global Consulting	Christine Smiley	Foundation
Thomas Schantz	Mary Shaffer	Sheryl Smiloff	Suzanne Steele
Rob Scheiderman	Jackie Shannon	Betsy Smith	Laura Stein
Amy Schere	Yiang Shao	Carol Smith	Diane Steingart
Bill Scherkey and	Steven Shapiro	Christine S. Smith	Donald M. Steinwachs
Melinda Thompson Scherkey	Bal Sharma	Elaine Smith	Valerie C. Stelling
Stephen Scherr	Shayeson Charitable Fund	Howard Smith	Barbara Stellwagen
Lynn F. Schibeci	Brad Sheehan	Hugh Smith	Pam Stephenson
Peter Schildkraut	Ann Sheerin	Lawrence Smith	Laura Stepnicka
Larry Schilling	Alvin Sheldon	Marc Smith	Margaret Stevens
Linda Beth Schilling	Ron Sheldon	Robert and Salwa Smith	Michael Stevens
Brenda Schimenti	William and Gertrude Shelley	Susan Smith	Thomas Stevens
John and Joyce Schladweiler	Family Foundation	Trinie Smith	Jim Steverson
Joanne Schlinkert	Charlita Shelton	Dianne Snedaker	David Stewart
Ryan Schlitt	Ben Shepherd	Peter Snoek	Dennis Stewart
Mary Schlough	Shepherd Foundation, Inc.	Jennifer Snyder	Gregory Stewart
Joseph Schmitt	Corby Sherwood	Ken Snyder	Ron Stewart
Mary and James Schmotzer	Robert Shiloh	Loren Snyder	Sarah Stivland

Marilyn, Kevin and Kjell Stoknes  
 Macy Stoneback  
 Emily Stoner  
 John Stoner  
 Greg and Joanne Stopka Charitable Trust, a Donor Advised Fund of the U.S. Charitable Gift Trust  
 Manette Storie  
 Mary R. Stouffer  
 GRC and Strategy  
 Jeff and Kelly Straub  
 Richard and Jo Anna Strawbridge  
 Jared Stroh  
 Clare Strohman  
 Cynthia Stubits  
 Kent Studebaker  
 Camden Stuerzenberger  
 Jan Stull  
 Roger Stumacher  
 Tim and Martha Stutzman  
 Donald Subert  
 Susan Sugarbaker  
 Aidan Suiter  
 Theresa Sullivan  
 Janice Summers  
 Mary E. Summers  
 Kit Sundararman  
 Supply Chain Shipping, LLC  
 Lainie Surette  
 The Susan Isabel Foundation  
 Janet and Myron Susin  
 Joyce Sutterer  
 Payson Swaffield  
 Patricia Swan  
 Robert and Donna Swanson  
 Susan Swanson  
 Adynna Swarz  
 Kristine Sweet  
 Bonnie Swerdlow  
 Nancy Swerdlow  
 Catherine Syrett  
 The T. and B. Smith Family Fund  
 Rebecca Tabb  
 The Taddiken Family Fund  
 Jenifer Takats  
 George Talbot  
 Tanana Chiefs Conference  
 Nancy Tandy  
 Arnold Tannenbaum  
 Martha and John Tanner  
 Paul Tarabek  
 William Tausig  
 Marc Taxman  
 Faye Taylor  
 Gavin and Allison Taylor  
 Linda Taylor  
 Lonna Taylor  
 Robert and Faye Taylor  
 Todd Taylor

Jane Teasley  
 Dayna and Herb Telidetzki  
 Anthony and Donna Telliard  
 Renee Tepper  
 Richard Terrazano  
 Marcia Terry  
 Tripti Thakur  
 Jean Thiel  
 Kathryn Thieleke  
 Alberta Thien  
 Mary E. Thole  
 Ann A. Thomas  
 Michael Thomas  
 Paul Thomas  
 Michael Thompson  
 Jeanne Thomson  
 Brooke Thorne  
 Tillie Tice  
 The Ernst & Gertrude Ticho Charitable Foundation  
 Gabriel Ticho  
 Matthew Tidd  
 Tillman Thomson Family Fund  
 Kerry Timbers  
 Tippet Family Charitable Fund  
 Peter Toal  
 Michele Tobenkin  
 Good Today  
 The Donald A. & Alice L. Tollefson Foundation, Inc.  
 David W. and Cynthia M. Tomaino  
 Antonio Torlai  
 Andreyra Tornes  
 Todd and Shelly Torset  
 Patricia Toyotoshi  
 Bryan Tracy  
 Cathy Trageser  
 John Trautwein  
 Edward and Ann Travis  
 Gregory Travis  
 Warren and Patricia Trepeta  
 Aileen Trollinger  
 Nicole Trowbridge  
 Garry B. Trudeau and Jane Pauley  
 Tammy Truher  
 Barbara Trumbo  
 The Darla Dee Turlington Charitable Foundation  
 Johnnie Turner  
 Sara Turner  
 William Turner  
 Lash and Gigi Turville  
 Daniel Tynan  
 Susan Udewitz  
 Robert Ufer  
 The Ukululus  
 Donald and Susan Ullmann  
 Unitarian Universalist Church of Lexington  
 Unitarian Universalist Congregation of Wilmington

United Methodist Church of Libertyville  
 Unum Group  
 Deborah Updike  
 Zipora Urbach  
 Matthew Urban  
 Mary Uricchio  
 Francis Valcour  
 John Van Buskirk  
 Yvonne Van Der Linden  
 Sylvia Van Dusen  
 Charles Van Heel  
 Robert Van Iten  
 The Van Metre Family Foundation  
 Kathryn Vandyke  
 Michelle Vanek  
 Rose-Marie Vanotterloo  
 Brian Varano  
 Ricardo Varela  
 Barbara Vella  
 Haley Vera  
 Inge Verweij  
 VideoAmp  
 Theresa and Neal Vigil  
 Janani Vigneswaran  
 Jesse Viner  
 Cam Vo  
 Raymond Voegeli  
 Phyllis and Herbert Vogel  
 Simone M. Vogler Trust  
 William Vollero  
 Sheila Von Euer  
 Barbara Vonnegut  
 Jonathon Voss  
 Alkinoos Vourlekis  
 Christopher Voyiatt  
 Charlene Vukovich  
 James E. Vyse  
 Janeen Waddell  
 Connie and William Waddington  
 Barbara Wagner  
 Mary Wagner  
 Sara Wagschal  
 Andreas Wahle  
 Kari Wahlgren  
 Michael and Eileen Waidelich  
 Amory Wakefield  
 Jo-Ann Wald  
 Anne Waldron  
 Alka Walia  
 Gloria Walker  
 Mellissa Walker  
 Steven M. Wallace  
 The Wallace Foundation  
 Carl and Judy Walsh  
 James Walsh  
 Judy Walsh  
 Linda Walsh  
 Pamela Walsh  
 Richard and Jeanette Walsh  
 Tim Walsh

David Walter  
 Lissa Walter  
 Riska Platt Wanago  
 Jennifer Wang  
 Warner/Roback Family Fund  
 Douglas and Susan Warsett  
 Elizabeth Wasdyke  
 Pat Wastal  
 Ron Wastal  
 Karen Watson  
 Lyndon and Sherry Waugh  
 David Wawrzynski  
 W. Andrew Weas Jr.  
 Angela Weatherspoon  
 Sarah Webb  
 Hartley D. Webster Charitable Fund  
 Pat Webster  
 Weedsport Central School District  
 Jeffrey Weidenfeller  
 Kyle Weidman  
 Bob Weimer  
 Anne Wein  
 Linda Weinberg  
 Irving & Shari Weinberger Foundation  
 Barbara Weiner  
 Jess Weiner  
 Weinstein Zeidman Donor Fund  
 Marilyn and Paul Weintraub  
 Lauren Weiss  
 Robert P. Weisz  
 Holly Welborn  
 Bonnie Welch  
 Jacqueline Welch  
 Linden Welch  
 Katherine Welcher  
 Wellpath, LLC  
 Theodore Wells  
 Welman Family Fund  
 Peter Wendzel  
 John Wenner  
 Bobbi J. Wenzler  
 Fred P. Wessel  
 Thomas Wessel  
 Christine Westenberger  
 Lindsay Weston  
 Mark and Muriel Wexler Foundation  
 Naida S. Wharton Foundation  
 Seldon Whitaker  
 Beverly White  
 Carolyn White  
 Lee White  
 Steven White  
 White Family Trust  
 Franchelle Whitehead  
 Kelly Whittington  
 David Wholley  
 David and Mara Wicklund  
 Margaret Wieber  
 Wiegmann Giving Fund

Diana and Joel A. Wier III	Christine Wirth	Harriet Woods	Josh Yurkanin
Mayra Wiessner	Margot Witty	Kevin Woods	Diana Zach
Rick Wilbur	Van Woeltz	Gerald Woodward	Leon and Sharon Zaczek
Sherman Wilcox	Christine Wojdyla	Ronald Woodyard	Joe Green Alison Zaeder Fund
The Wilczynski Foundation	Sudhir Wokhlu	Michael Woolington	Carol Zahradnik
Elizabeth Williams	Christine Wolf	Laura and Michael Workman	Darlene Zak
Jim Williams	Wolf Cabinetry	William Wortmann	John Zakej and
Laurel Williams	Anthony Wolfbauer	Wendy Wray	Bonnie Watkins
Pamela S. Williams	Diane Wolfe	The Wulff Family Fund	Jessica Zaklad
Pierson Williams	E. Judson Wolfe	Susan Wyman	Abdallah Zamaria
Steven and Linda Williams	William and Betty Wolfe	Ya Deau Family	James and Katherine Zartman
Gail Willner-Giwerc	Nancy and Charles Wolfram	Charitable Fund	Diane and David Zell
Karen Wilmer	Mona Wolpe	Alisa Yaffa	Jamie Zelvin
Wilmington Trust, N.A.	Ann Wolverton and	Yarbrough Family Foundation	George Zhang
Diana M. Wilson	Michael Kazhdan	Jenny Yie	Kevin Zidek
Edward and Barbara Wilson	Allison Wong	Eric Yorke	Sheryl Zimmerman
Hillary Wilson	Brian Wood	Clarence F.W. & Virginia W.L.C.	Frank and Ann Zingheim
Jerry Wilterding	Heidi Wood	Young Fund of the Hawai'i	Lori Zukin
Christina H. Wing	Melody Wood	Community Foundation	Beverly Zwak
Mandy Wingfield	Richard Wood and	Elizabeth Young	Michael Zweig
Michelle Winner	Deborah Garnick	Heather Young	Walter Zydlowski
Norman Winskill	Corrin Woodard	Marilyn Young	
Patricia Winters	Doreen Woodland	Daisy Yuhas	

---

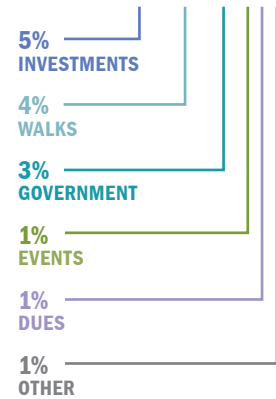
*We sincerely regret any inaccuracies or omissions. To notify us of errors, please reach out to NAMI Donor Services at [DonorServices@nami.org](mailto:DonorServices@nami.org) or 888-999-6264.*

# 2019 Financial Results

2019 REVENUE\*  
**\$27 M**



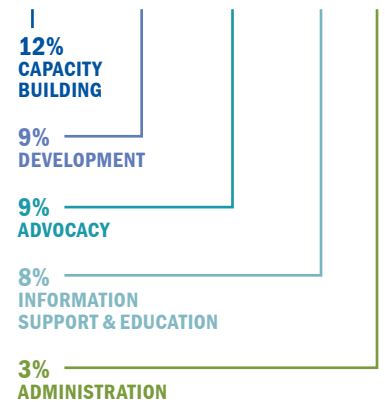
CONTRIBUTIONS	\$16.3 M
IN-KIND	\$6.4 M
INVESTMENTS	\$1.5 M
WALKS	\$1.1 M
GOVERNMENT	\$0.7 M
EVENTS	\$0.4 M
DUES	\$0.3 M
OTHER	\$0.3 M



2019 EXPENSES  
**\$24.3 M**



PROGRAMS & MEMBERSHIP	\$14.3 M
CAPACITY BUILDING	\$2.8 M
DEVELOPMENT	\$2.2 M
ADVOCACY	\$2.2 M
INFORMATION SUPPORT & EDUCATION	\$2.0 M
ADMINISTRATION	\$0.8 M



**TOTAL NET ASSETS: \$17,447,609**

\*The Revenue numbers above were revised in June 2020 to conform to NAMI's 2019 Annual Audit. No changes were made to the Expense numbers.

# Help us change the story for millions with mental illness.

NAMI relies on the support of partners like you to keep our mission moving forward. To share your personal story, learn more about the mental health movement or make a tax-deductible gift, reach out to us today.



## National Alliance on Mental Illness

4301 Wilson Boulevard, Suite 300  
Arlington, VA 22303  
703-524-7600

## [NAMI.org/Get-Involved/Donate](https://www.nami.org/Get-Involved/Donate)

 [Facebook.com/NAMI](https://www.facebook.com/NAMI)

 [@NAMICommunicate](https://twitter.com/NAMICommunicate)

 [@namicommunicate](https://www.instagram.com/namicommunicate)

 [notalone.nami.org](http://notalone.nami.org)

 [ok2talk.org](http://ok2talk.org)

 [Youtube.com/NAMIvideo](https://www.youtube.com/NAMIvideo)

